

Table of Contents

- 1 BULLETIN REGARDING RANDOM VARIATIONS, COLOR, STREAKERS, ETC.
- 2 TYPICAL DECK INSTALLATION WITH OVERHANG
- 3 GETTING STARTED WITH FIRST PLANK ON A TYPICAL DECK
- 4 ADDING MIDDLE PLANKS
- 5 HANDLING THE LAST PLANK, C-CHANNEL OR L-TRIM
- 6 STAIR STRINGERS, CUTTING AND COVERING
- 7 DIMENSIONAL STACK UP OF PLANKS
- 8 TRIMMING MAIN BEAMS WITH FACIA
- 9 DEALING WITH WALWAYS ON WRAP-AROUNDS
- 10 CUTTING PLANKS FOR BUTT JOINTS

OTHER READILY AVAILABLE INSTRUCTIONS

RAILING INSTALLATION

CUTTING STAIR STRINGERS FOR DECK LOK APPLICATIONS

DECK LOK ABBREVIATED INSTRUCTIONS

IMPORTANT PRODUCT BULLETIN

To: All Royal Crown Dealers
From: Denny Yoder
Re: Deck Lok™ Systems Variegation

As you know we have endeavored to design a deck board that has a wood look, similar to the wood grain effect from wood planking. Our goal has been to use a base color and then add a variation of “streakers” to add the character and variegations of a wood grain effect.

The process we have developed, and continue to work and improve upon, allows for this “variegated” look of real wood. There is, and will continue to be, a noticeable variation in the graining “streaking” process, and the color and wood character from board to board, bundle to bundle, and truckload to truckload. This is something that is random and we have minimal control of “streakers” as they are extruded.

It is very important during the installation process to be deliberate in randomly selecting boards, especially when the size of the installation requires several bundles and board lengths. These deliberate random selections will help keep from having “groups” of boards together and will help insure the “blend” effect very much like a real wood installation.

We cannot replace random variations and cannot warranty changes in the graining “streaking” and variegation process. We feel that random selection of boards during the installation process should bring satisfaction to all customers.

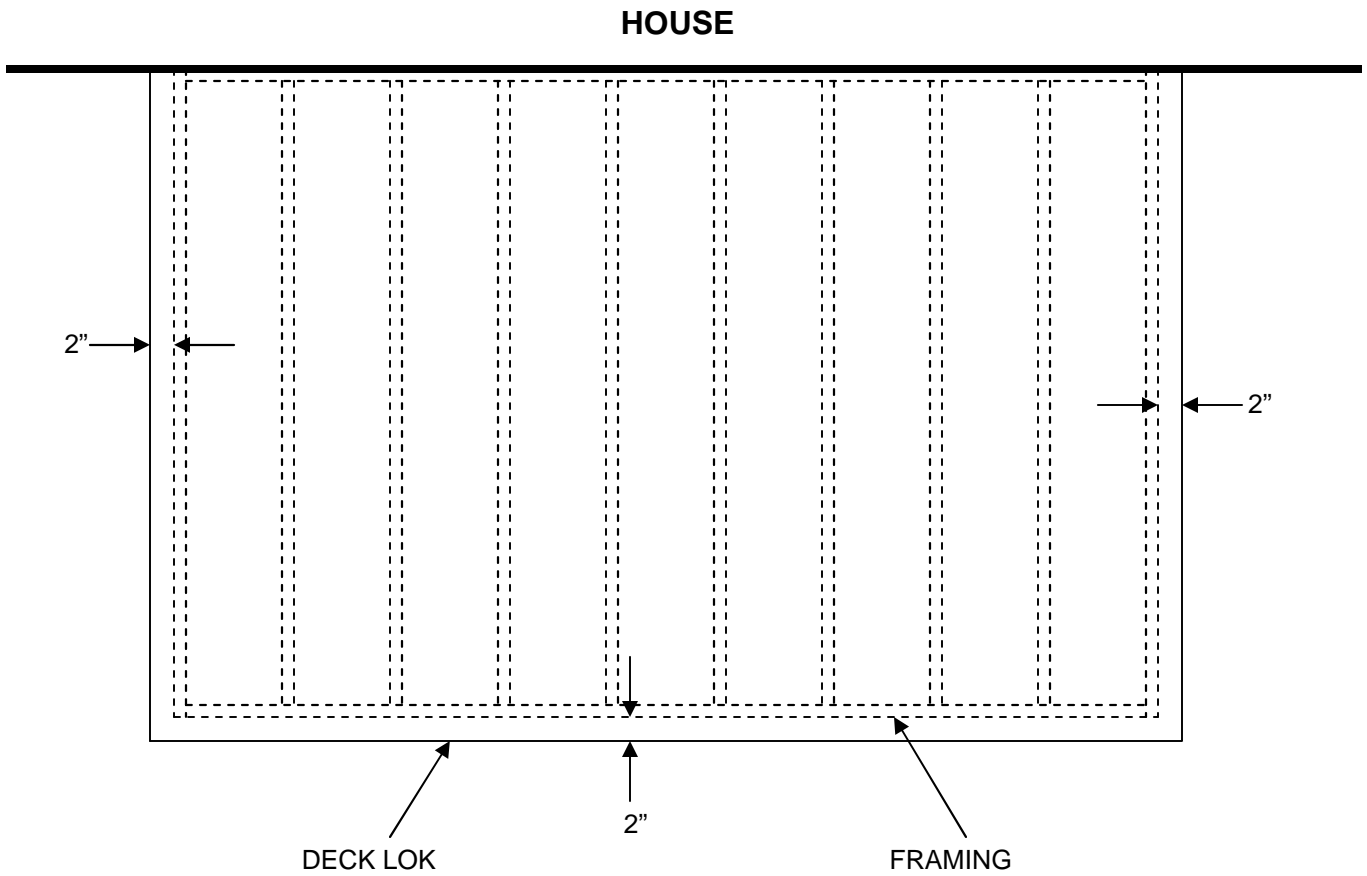
We are doubling our Deck Lok productions by adding two more extruders. In doing so, the more extruders that run the product, the more frequent possibility of variation may be apparent. It will be important to deliberately make random selections of boards for all Deck Lok installations. The third line of Deck Lok should be up and running by April 2005 and the fourth line by May 2005.

To remove your number, please call 888-532-7888 or 650-254-9052 Pin: 90225. If phone number is busy, please try again.



TYPICAL FRAMING

The most common method of framing allows the Deck Lok material to overhang 2" on each side. This allows C-channel to slide on to the deck material easily. However, L-trim is available where the decking does not overhang (See page 3). As an example, for a 10' x 20' deck with overhang, the frame would be 9'10" x 19' 8". See page 6 for actual stack-up of planks. See page 4 for L-trim/push pin finishing.

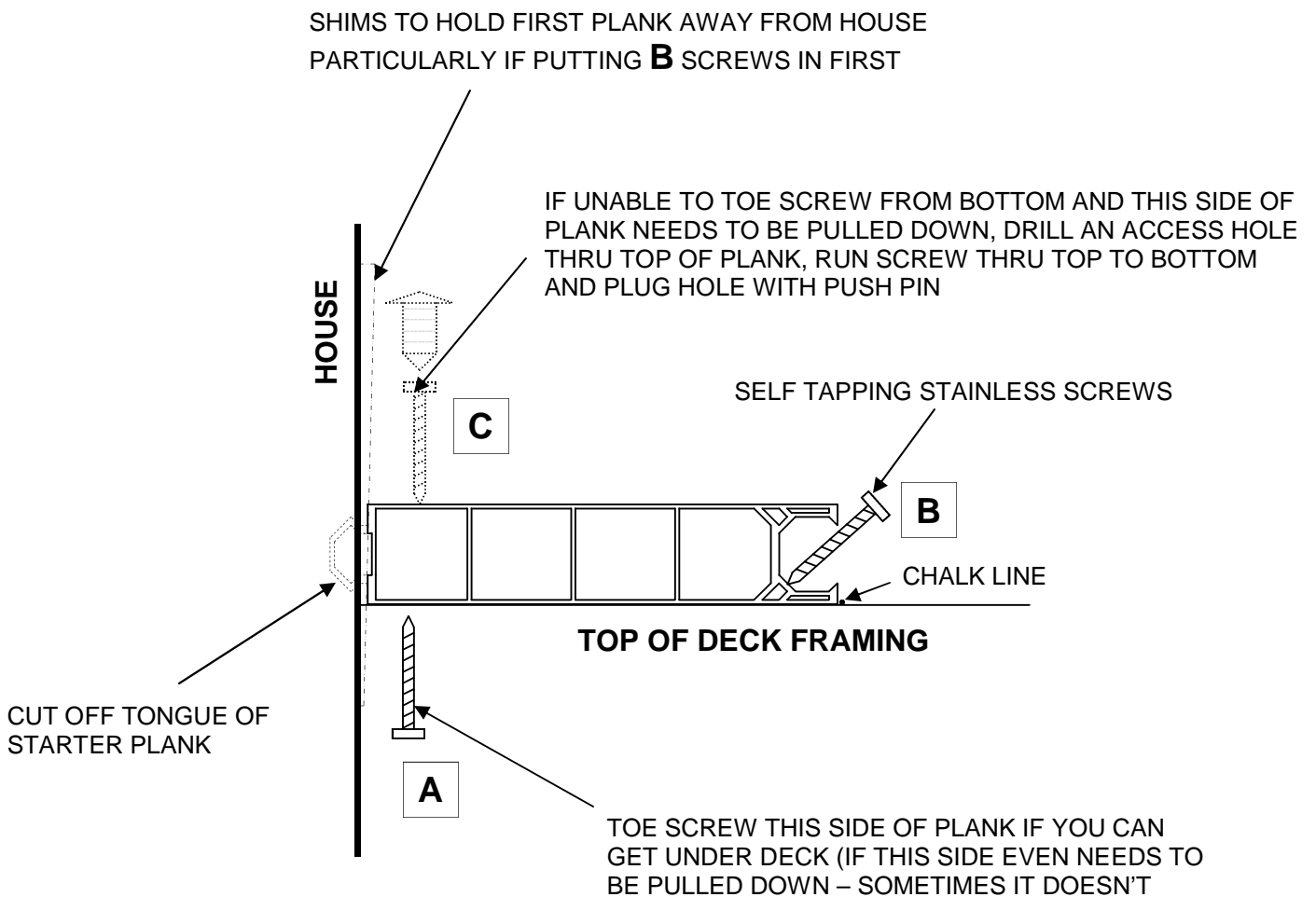


GETTING STARTED

Since the back of house is not necessarily straight and the planks are somewhat flexible, you will want to chalk a line across the framing about where the outside edge of the first plank will fall.

Usually the deck starts up against the house. The starter plank is created by ripping the tongue off of the first plank. Typically the angled screws in the groove **B** are put in next. This may force the plank against the house so it is a good idea to insert some shims between the house and the first plank to hold the plank on or near the chalk line.

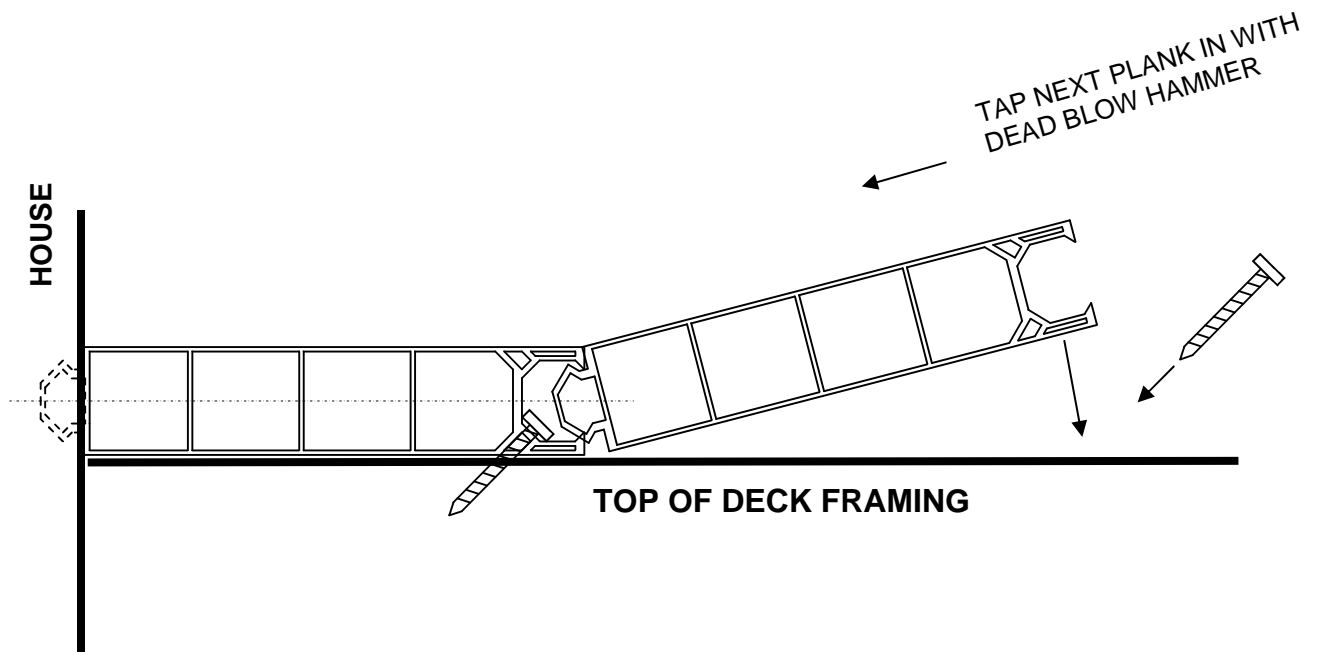
If the house side of the plank is not held down due to screw **B**, you will want to hold down the house edge by one of two methods. Where possible, toe screwing from below through a few joists is usually sufficient (screw **A**). If the house side needs to be held down and it is not possible to get to the bottom, a 1/4" hole can be drilled thru the top wall, a deck or drywall screw **C** will pop thru the hole and seat against the bottom wall to pull it down. The 1/4" hole can then be filled with a push pin.



MIDDLE PLANKS

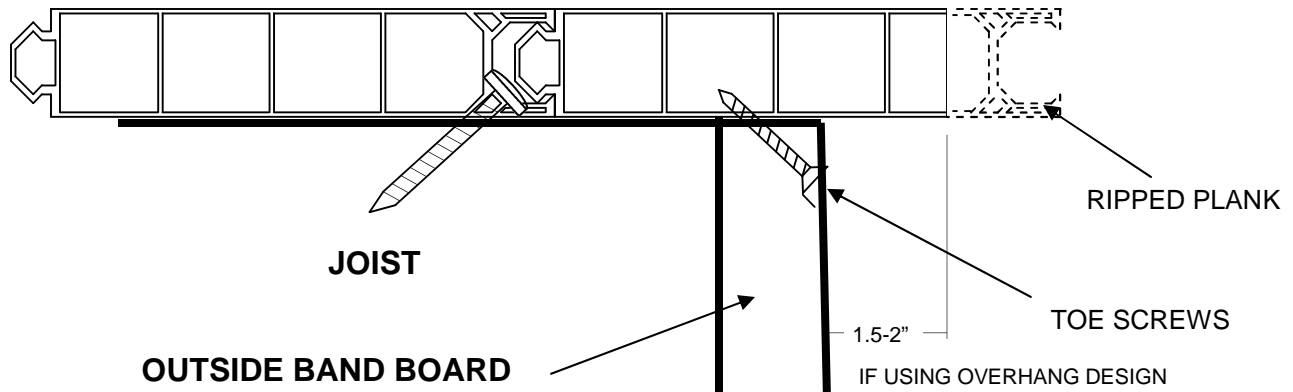
Adding the remainder of the planks is simply a matter of 1) tapping them in with a dead blow hammer (if using a rubber mallet, put a sweat sock over the rubber to avoid black marks) and 2) setting the self tapping stainless screws in each joist.

There will be some flex in the plank. After tapping the next plank in, push it up against the side of the first plank with your foot as you screw it down.



THE LAST PLANK

Sometimes, the last plank will need to be ripped so that it does not overhang too much. The outside is usually held down by toe screwing (if necessary).



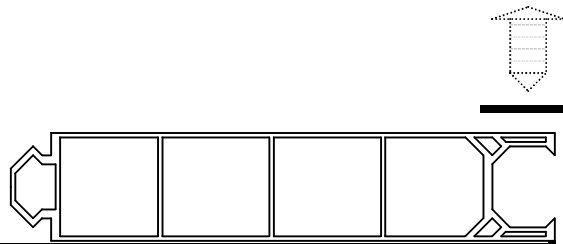
TRIMMING THE LAST PLANK WITH C-CHANNEL



TOP OF DECK FRAMING

If the outside edge is extended a minimum of 1 1/2" past the frame, you can use C-channel to finish. This is most common since the deck material is usually extended 1 1/2-2" past the frame on each side.

TRIMMING THE LAST PLANK WITH L-TRIM



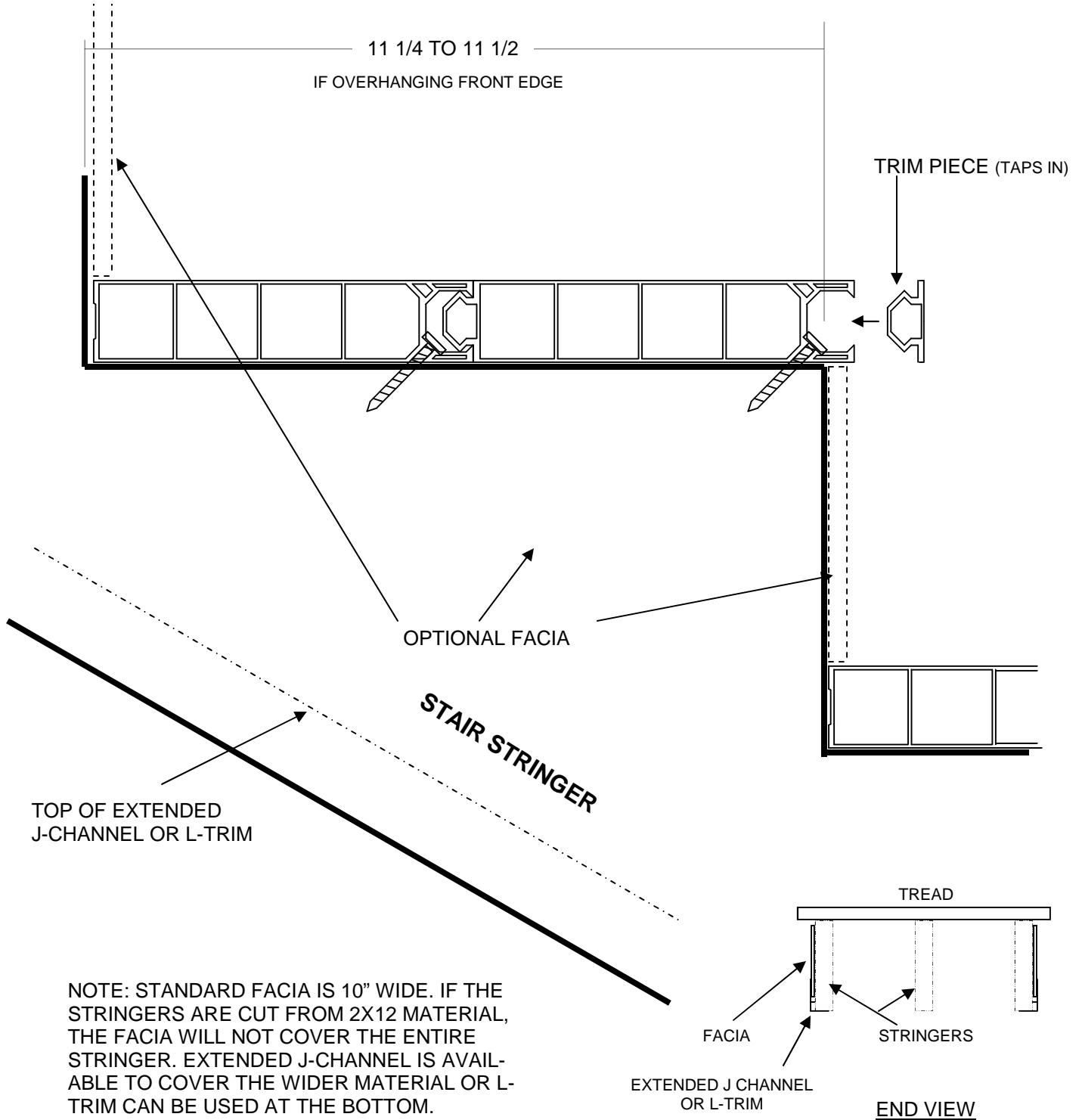
TOP OF DECK FRAMING

If the outside edge stops at the frame, you can use L-trim to finish it off and hold the L-trim in place with push pins.

STAIRS

On stairs, a trim piece is available to finish the groove side of the treads. The ends of the treads are usually finished with C-channel so the treads usually extend at least 1 1/2" past the outside stringers on the sides. For 3'-4" wide steps, three stringers are necessary. A combination of fascia, L-trim, optional J-channel and push pins can be used to enclose the steps.

Feel free to ask for instructions, "Cutting Stair Stringers for Deck Lok Applications"



NOTE: STANDARD FACIA IS 10" WIDE. IF THE STRINGERS ARE CUT FROM 2X12 MATERIAL, THE FACIA WILL NOT COVER THE ENTIRE STRINGER. EXTENDED J-CHANNEL IS AVAILABLE TO COVER THE WIDER MATERIAL OR L-TRIM CAN BE USED AT THE BOTTOM.

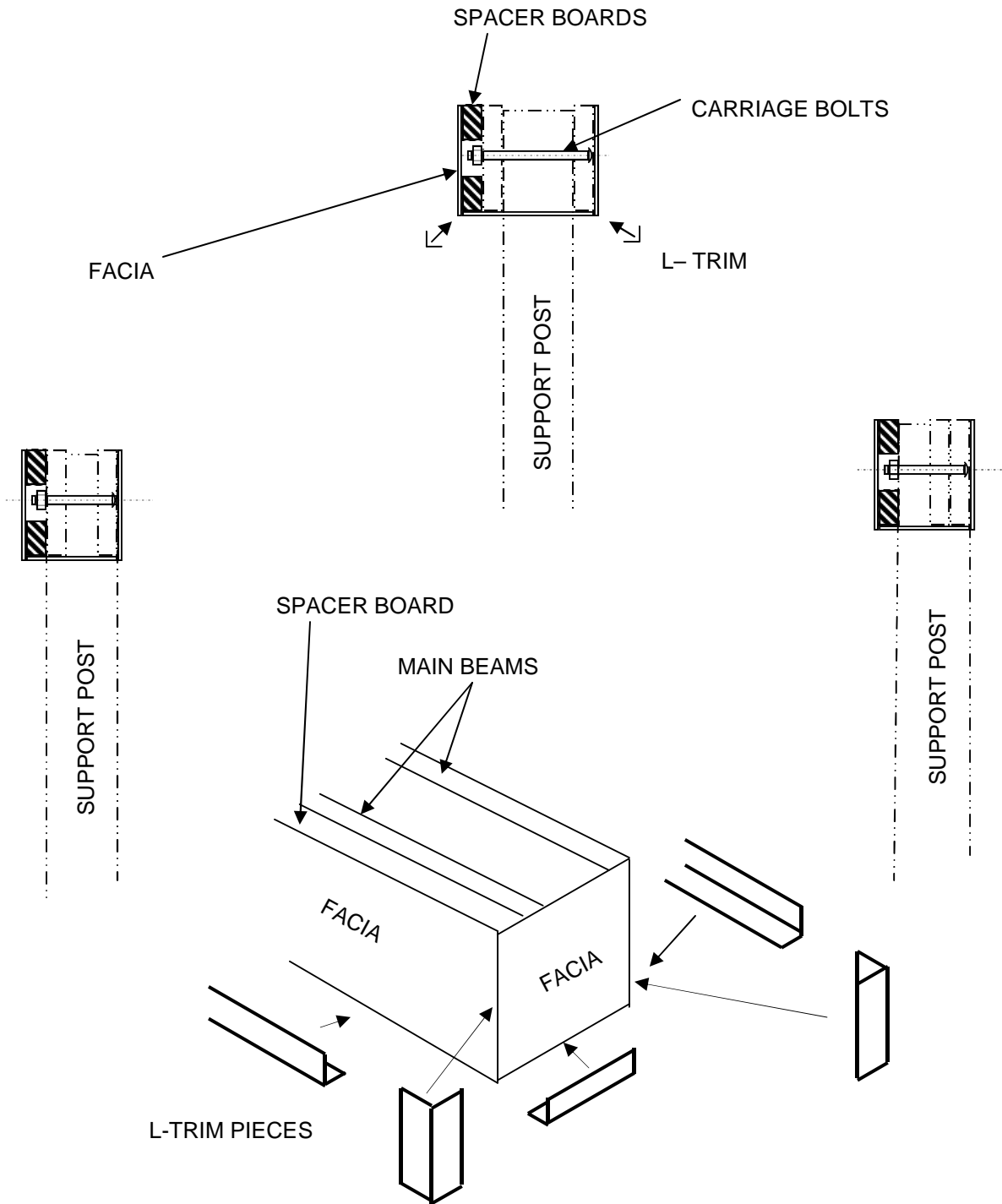
STACK UP OF NUMBER OF PLANKS

The width of a plank after installation (as measured on a finished deck) is approximately 5.861". The table below gives the approximate width of various quantities of planks. The table assumes that the planks have been pushed together (not necessarily clamped) and toe screwed as illustrated on the previous pages.

NO. OF PLANKS	PLANK STACK UP
1	5.86
2	11.72
3	17.58
4	23.44
5	29.31
6	35.17
7	41.03
8	46.89
9	52.75
10	58.61
11	64.47
12	70.33
13	76.19
14	82.06
15	87.92
16	93.78
17	99.64
18	105.50
19	111.36
20	117.22
21	123.08
22	128.94
23	134.81
24	140.67
25	146.53
26	152.39
27	158.25
28	164.11
29	169.97
30	175.83
31	181.69
32	187.56
33	193.42
34	199.28
35	205.14
36	211.00
37	216.86
38	222.72
39	228.58
40	234.44

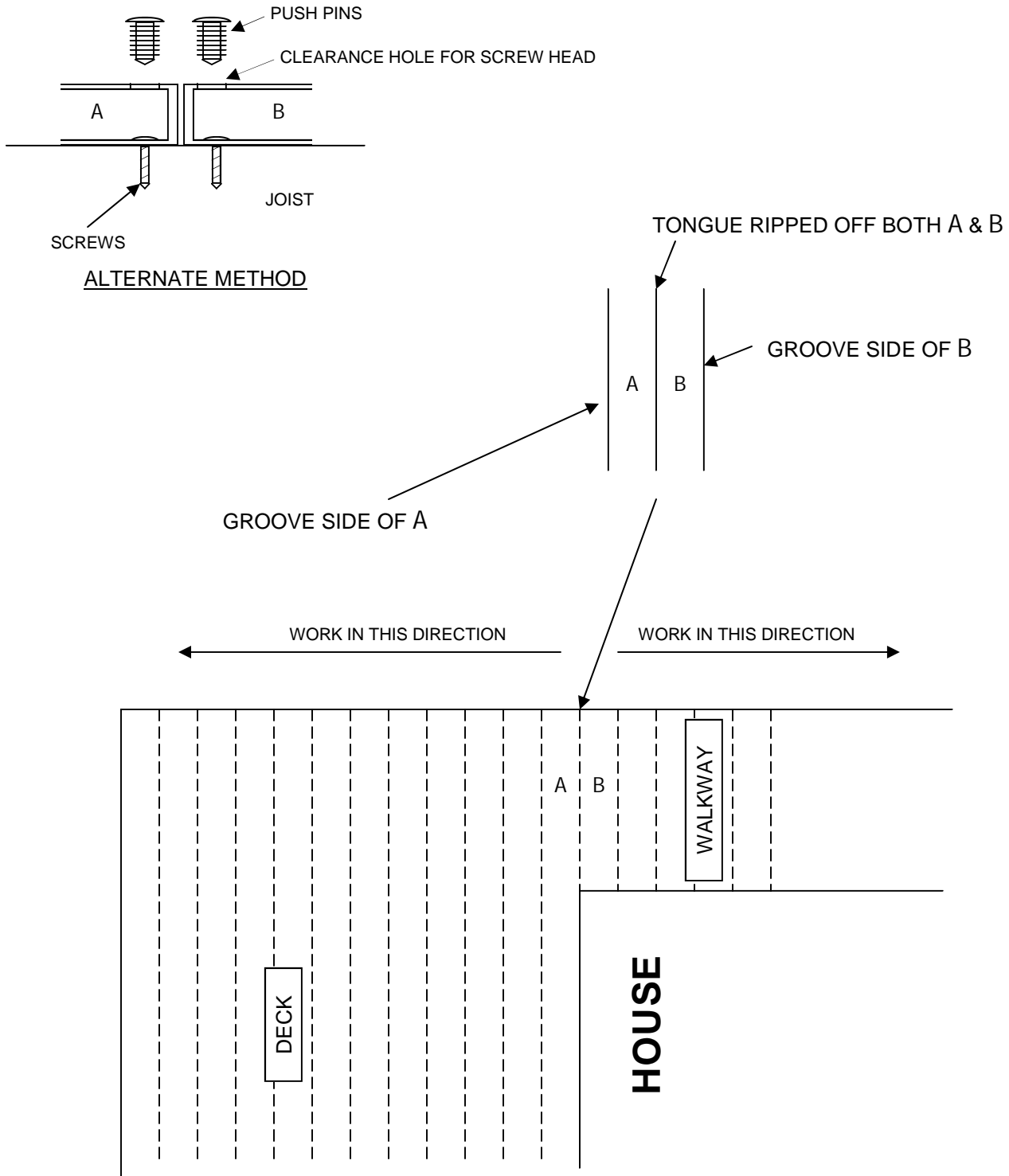
TRIMMING MAIN BEAMS & POSTS

Covering the main beams and posts is commonly accomplished with facia and L-trim on the main beam and post wrap around the posts. Often there are carriage bolts with nuts going through the posts and main beams requiring some spacer boards to "square off" the main beam facia.



DEALING WITH WALKWAYS

If there is a walkway off the deck as often happens when the deck is a wrap-around, the Deck Lok can be attached as illustrated below. Usually, the sides of the planks that meet can be pulled down and held securely by toe screwing from underneath through the corner of the joists. If it is impossible to access the deck from underneath. An alternate method is to attach the planks from above and use push pins to cover the holes in the top of the planks.



BUTT JOINTS

Deck Lok is only available up to 24' lengths. If your deck is longer and you choose to “scatter” or vary the lengths (as opposed to using T-strips), you will want to minimize any spacing at the joint, i.e., create a “hairline” butt joint. The best way is to set your saw on a slight angle so only the top of the planks meet. Also, after tapping a plank in, you will want to lightly tap the end to assure they are butted well before screwing down.

