

FRONT COVER

TABLE OF CONTENTS

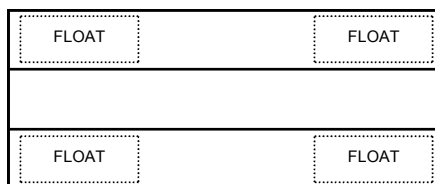
Table of Contents _____	1
Basic information, the module concept, floating versus fixed _____	2
Building your own dock, kits or custom _____	3
Typical small recreational docks with kit prices:	
6x12 One piece floater _____	4
Fixed pier, posts inside _____	5
Fixed pier, posts outside _____	6
Floater/semi-floater _____	7
Floater with fixed walkway _____	8
Other common configurations _____	9
Dock parts, floating and stationary _____	10-11
Fixed pier parts _____	12-13
Floats _____	14-16
Fasteners, stiff arm fittings _____	17
Rub rail _____	18
Accessories, dock wheels, corner bumpers, cleats, post lights _____	19
Dock boxes, slanted ladders _____	20
Other ladders _____	21
<i>Roll-Easy</i> docking ramps, PWC floating platforms _____	22
<i>UniFrame</i> docks, <i>DOCK Lite</i> docks _____	23
Boat lifts _____	24
<i>“Classic”</i> vinyl docks, decking material _____	25
Design services, handy tools, other literature _____	26
Driving directions _____	Back Cover

HAVE IT YOUR WAY

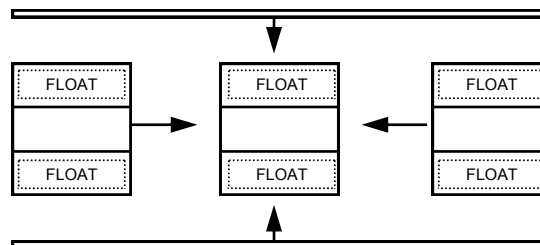
Tri-State is proud to introduce our new and expanded 2008 catalog. Responding to customer requests, we now offer several kits for the do-it-yourselfer as well as expanded design services. Whether you're looking for a complete installation, a custom dock, a kit, or just parts, we are likely to have the parts you need in stock and we're here to help.

THE MODULE CONCEPT & BASIC INFORMATION

Our concept of dock modules evolved over the years as a method of building docks that require minimal manpower to construct and handle. Module designs may cost a little more but are usually worth considering. On the other hand, if you have enough manpower and equipment to maneuver it, a one piece dock may be the best choice for you. These drawings illustrate the details of building either one.



6'x12' ONE PIECE FLOATING DOCK
STRUCTURE (P. 4)



6'x12' FLOATING DOCK
BOLT (3) 4' X 6' MODULES TOGETHER
LAG SCREW BAND BOARDS ENTIRE LENGTH OF ASSEMBLY (P. 7)

The size of your dock is more a matter of usage than the size of your boat. If you simply need a dock for mooring your boat, the dock can be quite a bit shorter than your boat. For instance, a 12' long dock is long enough for a 18' boat.

A floating dock only 4' wide will not be stable - you will have a "rolling log" unless you find a way to stabilize it (which spud pipes alone will not do). A 4' wide finger off a main dock is okay since it is normally hooked to the main dock for stabilization. An independent floating dock should be at least 6' wide and 8' long. If seniors are using it, 8' x 10' minimum is recommended.

The four most common methods of anchoring your floating dock in place are:

- A. Pipe holders bolted to the dock running up and down on spud pipes driven into the bottom.
- B. Cables attached to the dock corners and running to shore.
- C. "Deadmen", e.g. concrete buckets (or other weights), sunken in the water and cabled to the dock.
- D. Stiff arm assemblies where pipes pivot on shore and at the dock (see page 17).

A fixed pier or stationary dock is invariably less expensive than a floating dock. The most common reasons for having a floating dock are:

1. The water is over 6' deep in the area of the dock and the support pipes would sway.
2. The water level varies over a foot and a fixed pier would often be under water or too far above the water, i.e., the "freeboard" is too great.
3. Wave action is heavy and a fixed pier would be periodically swamped.
4. Dock must be removed in the winter or is also used as a swim platform.

A walkway to your floating dock can be designed as fixed, semi-floating or floating. The fixed walkway is bolted to bracket/mudpipe assemblies (minimum water level variation). A semi-floating walkway pivots on shore and at the floating dock (see page 7). It is used when there is significant water level change or a pond is still filling. It is called semi-floating because it has one or two floats mounted only on the lake end. A full floating walkway is used on very deep lakes with a sharp dropoff at the shoreline. A full floater is commonly winched in and out as required as the water level changes.

If you are a first time dock builder, you may want to consider purchasing our **Dock Primer** booklet. In it you will find the answers to most of your questions about recreational docks. The price is \$15.00.

BUILDING YOUR OWN DOCK—KITS OR CUSTOM

You can build your own dock using parts in this catalog and be confident that you've built it just like the professionals. Since we offer design services as well as material, you can save considerable dollars by supplying your own wood and labor. Your cost is typically about half if you build and install it yourself.

Since most of our customers "know which end of the hammer to hold", questions most often revolve mainly around the best design and the best (and easiest) way to install the dock. Complete drawings, bills of materials and installation instructions are supplied with your order. By the way, most docks are installed when the water is "up", i.e., the lake is in pool.

Frames are usually 2x8 treated wood with galvanized steel bracketing added for strength and long term durability. How much steel bracketing should be included in the design depends on the type of service the dock will see. Although there are several dock designs and kits shown in our catalog, we actually spend a great deal of time designing kits for customers' custom dock sizes and configurations. Our general lexicon includes:

<u>DUTY</u>	<u>CONDITIONS</u>	<u>TYPICALLY INCLUDED IN DESIGN</u>
Light Duty	Fixed piers in relatively shallow water Few people using the dock	Includes inside corners and minimal joist angles
Medium Duty	Larger fixed piers, floating docks in relatively calm water, fixed piers in deeper water	Includes inside corners and joist angles in most joints
Heavy Duty	Fixed piers in rough water, floating docks in heavier wake areas, heavy usage	Includes inside corners and joist angles at all joints

In recent years, when installing fixed piers, most customers seem to prefer mounting the support pipes underneath the dock for appearance purposes. The usual procedure requires starting with pipe 4-6' longer than the water depth and eventually cutting the pipes prior to decking installation (see page 5).

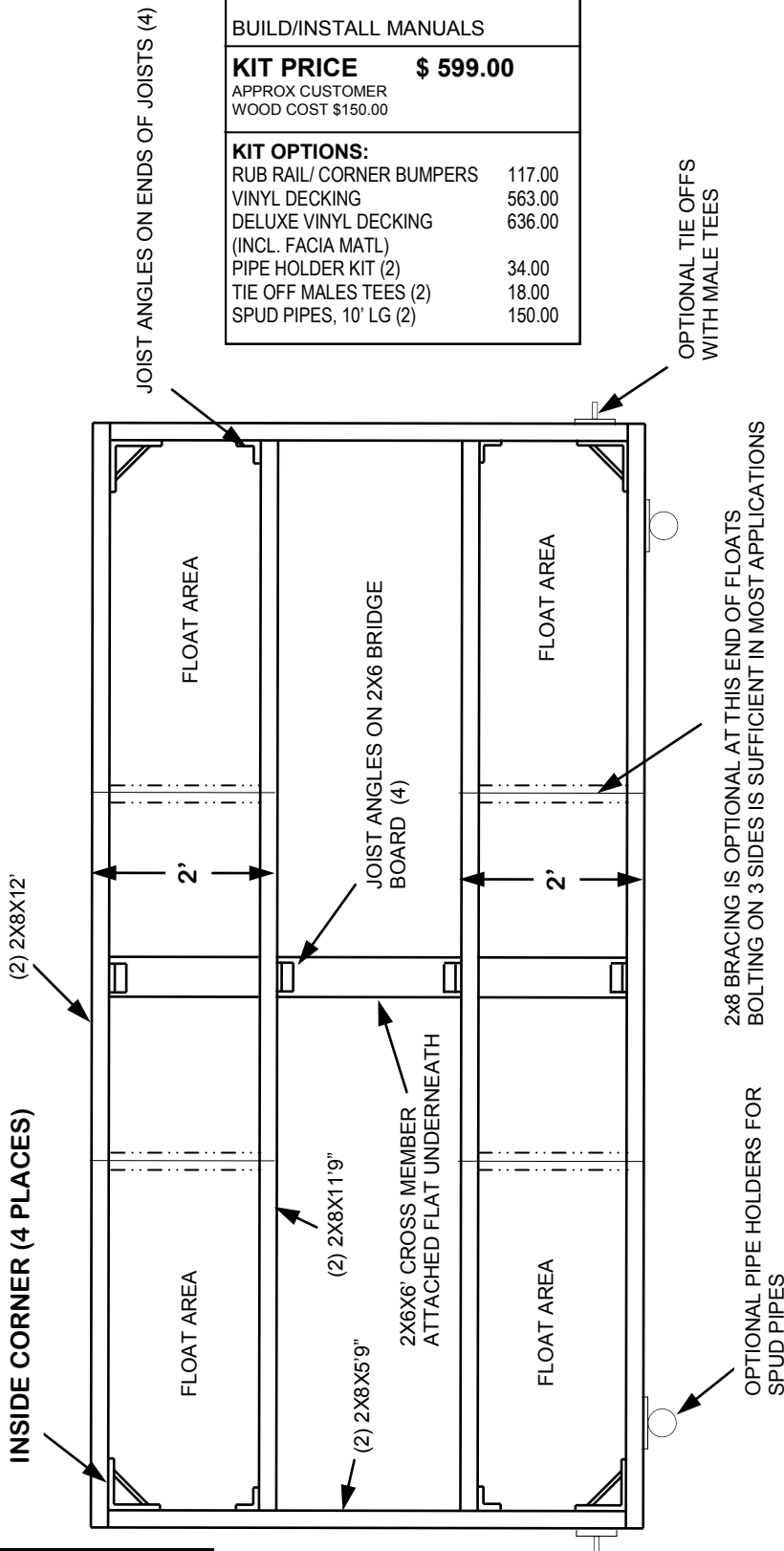
If you are still unsure of whether you prefer a fixed or floating dock, you can reread the bottom of the previous page or call us for a recommendation. Generally, if your fixed pier is in more than 6' of water, you will want to consider additional diagonal bracing.

No matter which design you choose, you will want to consider a maintenance free dock. Although the initial cost is higher than wood decking, the appearance, longevity and safety are well worth the additional cost. Trim material can be used around the periphery so that no wood is even visible.

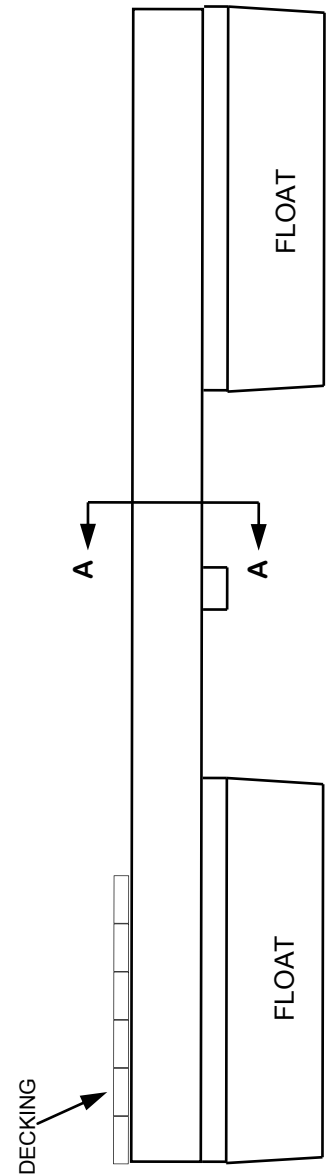
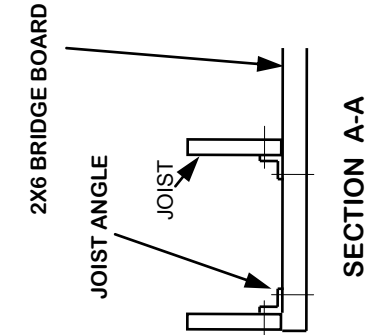
DESCRIPTION	UNIT	TOTAL	PRICE EA	EXTENDED	NOTES
		QTY	UNIT PRICE	PRICE	
DOCK LUMBER	2x8	100	\$1.50	\$150.00	
DOCK BRACKETING	1/2" GALV	50	\$2.00	\$100.00	
DOCK JOISTS	2x4	200	\$1.00	\$200.00	
DOCK DECKING	1/2" T&G	1000	\$1.00	\$1000.00	
DOCK TRIM	1x4	100	\$1.00	\$100.00	
DOCK FASTENERS	1/2" GALV	1000	\$0.50	\$500.00	
DOCK ANCHORS	1/2" GALV	100	\$10.00	\$1000.00	
DOCK BRACKETING	1/2" GALV	50	\$2.00	\$100.00	
DOCK JOISTS	2x4	200	\$1.00	\$200.00	
DOCK DECKING	1/2" T&G	1000	\$1.00	\$1000.00	
DOCK TRIM	1x4	100	\$1.00	\$100.00	
DOCK FASTENERS	1/2" GALV	1000	\$0.50	\$500.00	
DOCK ANCHORS	1/2" GALV	100	\$10.00	\$1000.00	
DOCK BRACKETING	1/2" GALV	50	\$2.00	\$100.00	
DOCK JOISTS	2x4	200	\$1.00	\$200.00	
DOCK DECKING	1/2" T&G	1000	\$1.00	\$1000.00	
DOCK TRIM	1x4	100	\$1.00	\$100.00	
DOCK FASTENERS	1/2" GALV	1000	\$0.50	\$500.00	
DOCK ANCHORS	1/2" GALV	100	\$10.00	\$1000.00	
DOCK BRACKETING	1/2" GALV	50	\$2.00	\$100.00	
DOCK JOISTS	2x4	200	\$1.00	\$200.00	
DOCK DECKING	1/2" T&G	1000	\$1.00	\$1000.00	
DOCK TRIM	1x4	100	\$1.00	\$100.00	
DOCK FASTENERS	1/2" GALV	1000	\$0.50	\$500.00	
DOCK ANCHORS	1/2" GALV	100	\$10.00	\$1000.00	
DOCK BRACKETING	1/2" GALV	50	\$2.00	\$100.00	
DOCK JOISTS	2x4	200	\$1.00	\$200.00	
DOCK DECKING	1/2" T&G	1000	\$1.00	\$1000.00	
DOCK TRIM	1x4	100	\$1.00	\$100.00	
DOCK FASTENERS	1/2" GALV	1000	\$0.50	\$500.00	
DOCK ANCHORS	1/2" GALV	100	\$10.00	\$1000.00	
DOCK BRACKETING	1/2" GALV	50	\$2.00	\$100.00	
DOCK JOISTS	2x4	200	\$1.00	\$200.00	
DOCK DECKING	1/2" T&G	1000	\$1.00	\$1000.00	
DOCK TRIM	1x4	100	\$1.00	\$100.00	
DOCK FASTENERS	1/2" GALV	1000	\$0.50	\$500.00	
DOCK ANCHORS	1/2" GALV	100	\$10.00	\$1000.00	
DOCK BRACKETING	1/2" GALV	50	\$2.00	\$100.00	
DOCK JOISTS	2x4	200	\$1.00	\$200.00	
DOCK DECKING	1/2" T&G	1000	\$1.00	\$1000.00	
DOCK TRIM	1x4	100	\$1.00	\$100.00	
DOCK FASTENERS	1/2" GALV	1000	\$0.50	\$500.00	
DOCK ANCHORS	1/2" GALV	100	\$10.00	\$1000.00	
DOCK BRACKETING	1/2" GALV	50	\$2.00	\$100.00	
DOCK JOISTS	2x4	200	\$1.00	\$200.00	
DOCK DECKING	1/2" T&G	1000	\$1.00	\$1000.00	
DOCK TRIM	1x4	100	\$1.00	\$100.00	
DOCK FASTENERS	1/2" GALV	1000	\$0.50	\$500.00	
DOCK ANCHORS	1/2" GALV	100	\$10.00	\$1000.00	
DOCK BRACKETING	1/2" GALV	50	\$2.00	\$100.00	
DOCK JOISTS	2x4	200	\$1.00	\$200.00	
DOCK DECKING	1/2" T&G	1000	\$1.00	\$1000.00	
DOCK TRIM	1x4	100	\$1.00	\$100.00	
DOCK FASTENERS	1/2" GALV	1000	\$0.50	\$500.00	
DOCK ANCHORS	1/2" GALV	100	\$10.00	\$1000.00	
DOCK BRACKETING	1/2" GALV	50	\$2.00	\$100.00	
DOCK JOISTS	2x4	200	\$1.00	\$200.00	
DOCK DECKING	1/2" T&G	1000	\$1.00	\$1000.00	
DOCK TRIM	1x4	100	\$1.00	\$100.00	
DOCK FASTENERS	1/2" GALV	1000	\$0.50	\$500.00	
DOCK ANCHORS	1/2" GALV	100	\$10.00	\$1000.00	
DOCK BRACKETING	1/2" GALV	50	\$2.00	\$100.00	
DOCK JOISTS	2x4	200	\$1.00	\$200.00	
DOCK DECKING	1/2" T&G	1000	\$1.00	\$1000.00	
DOCK TRIM	1x4	100	\$1.00	\$100.00	
DOCK FASTENERS	1/2" GALV	1000	\$0.50	\$500.00	
DOCK ANCHORS	1/2" GALV	100	\$10.00	\$1000.00	
DOCK BRACKETING	1/2" GALV	50	\$2.00	\$100.00	
DOCK JOISTS	2x4	200	\$1.00	\$200.00	
DOCK DECKING	1/2" T&G	1000	\$1.00	\$1000.00	
DOCK TRIM	1x4	100	\$1.00	\$100.00	
DOCK FASTENERS	1/2" GALV	1000	\$0.50	\$500.00	
DOCK ANCHORS	1/2" GALV	100	\$10.00	\$1000.00	
DOCK BRACKETING	1/2" GALV	50	\$2.00	\$100.00	
DOCK JOISTS	2x4	200	\$1.00	\$200.00	
DOCK DECKING	1/2" T&G	1000	\$1.00	\$1000.00	
DOCK TRIM	1x4	100	\$1.00	\$100.00	
DOCK FASTENERS	1/2" GALV	1000	\$0.50	\$500.00	
DOCK ANCHORS	1/2" GALV	100	\$10.00	\$1000.00	
DOCK BRACKETING	1/2" GALV	50	\$2.00	\$100.00	
DOCK JOISTS	2x4	200	\$1.00	\$200.00	
DOCK DECKING	1/2" T&G	1000	\$1.00	\$1000.00	
DOCK TRIM	1x4	100	\$1.00	\$100.00	
DOCK FASTENERS	1/2" GALV	1000	\$0.50	\$500.00	
DOCK ANCHORS	1/2" GALV	100	\$10.00	\$1000.00	
DOCK BRACKETING	1/2" GALV	50	\$2.00	\$100.00	
DOCK JOISTS	2x4	200	\$1.00	\$200.00	
DOCK DECKING	1/2" T&G	1000	\$1.00	\$1000.00	
DOCK TRIM	1x4	100	\$1.00	\$100.00	
DOCK FASTENERS	1/2" GALV	1000	\$0.50	\$500.00	
DOCK ANCHORS	1/2" GALV	100	\$10.00	\$1000.00	
DOCK BRACKETING	1/2" GALV	50	\$2.00	\$100.00	
DOCK JOISTS	2x4	200	\$1.00	\$200.00	
DOCK DECKING	1/2" T&G	1000	\$1.00	\$1000.00	
DOCK TRIM	1x4	100	\$1.00	\$100.00	
DOCK FASTENERS	1/2" GALV	1000	\$0.50	\$500.00	
DOCK ANCHORS	1/2" GALV	100	\$10.00	\$1000.00	
DOCK BRACKETING	1/2" GALV	50	\$2.00	\$100.00	
DOCK JOISTS	2x4	200	\$1.00	\$200.00	
DOCK DECKING	1/2" T&G	1000	\$1.00	\$1000.00	
DOCK TRIM	1x4	100	\$1.00	\$100.00	
DOCK FASTENERS	1/2" GALV	1000	\$0.50	\$500.00	
DOCK ANCHORS	1/2" GALV	100	\$10.00	\$1000.00	
DOCK BRACKETING	1/2" GALV	50	\$2.00	\$100.00	
DOCK JOISTS	2x4	200	\$1.00	\$200.00	
DOCK DECKING	1/2" T&G	1000	\$1.00	\$1000.00	
DOCK TRIM	1x4	100	\$1.00	\$100.00	
DOCK FASTENERS	1/2" GALV	1000	\$0.50	\$500.00	
DOCK ANCHORS	1/2" GALV	100	\$10.00	\$1000.00	
DOCK BRACKETING	1/2" GALV	50	\$2.00	\$100.00	
DOCK JOISTS	2x4	200	\$1.00	\$200.00	
DOCK DECKING	1/2" T&G	1000	\$1.00	\$1000.00	
DOCK TRIM	1x4	100	\$1.00	\$100.00	
DOCK FASTENERS	1/2" GALV	1000	\$0.50	\$500.00	
DOCK ANCHORS	1/2" GALV	100	\$10.00	\$1000.00	
DOCK BRACKETING	1/2" GALV	50	\$2.00	\$100.00	
DOCK JOISTS	2x4	200	\$1.00	\$200.00	
DOCK DECKING	1/2" T&G	1000	\$1.00	\$1000.00	
DOCK TRIM	1x4	100	\$1.00	\$100.00	
DOCK FASTENERS	1/2" GALV	1000	\$0.50	\$500.00	
DOCK ANCHORS	1/2" GALV	100	\$10.00	\$1000.00	
DOCK BRACKETING	1/2" GALV	50	\$2.00	\$100.00	
DOCK JOISTS	2x4	200	\$1.00	\$200.00	
DOCK DECKING	1/2" T&G	1000	\$1.00	\$1000.00	
DOCK TRIM	1x4	100	\$1.00	\$100.00	
DOCK FASTENERS	1/2" GALV	1000	\$0.50	\$500.00	
DOCK ANCHORS	1/2" GALV	100	\$10.00	\$1000.00	
DOCK BRACKETING	1/2" GALV	50	\$2.00	\$100.00	
DOCK JOISTS	2x4	200	\$1.00	\$200.00	
DOCK DECKING	1/2" T&G	1000	\$1.00	\$1000.00	
DOCK TRIM	1x4	100	\$1.00	\$100.00	
DOCK FASTENERS	1/2" GALV	1000	\$0.50	\$500.00	
DOCK ANCHORS	1/2" GALV	100	\$10.00	\$1000.00	
DOCK BRACKETING	1/2" GALV	50	\$2.00	\$100.00	
DOCK JOISTS	2x4	200	\$1.00	\$200.00	
DOCK DECKING	1/2" T&G	1000	\$1.00	\$1000.00	
DOCK TRIM	1x4	100	\$1.00	\$100.00	
DOCK FASTENERS	1/2" GALV	1000	\$0.50	\$500.00	
DOCK ANCHORS	1/2" GALV	100	\$10.00	\$1000.00	
DOCK BRACKETING	1/2" GALV	50	\$2.00	\$100.00	
DOCK JOISTS	2x4	200	\$1.00	\$200.00	
DOCK DECKING	1/2" T&G	1000	\$1.00	\$1000.00	
DOCK TRIM	1x4	100	\$1.00	\$100.00	
DOCK FASTENERS	1/2" GALV	1000	\$0.50	\$500.00	
DOCK ANCHORS	1/2" GALV	100	\$10.00	\$1000.00	
DOCK BRACKETING	1/2" GALV	50	\$2.00	\$100.00	
DOCK JOISTS	2x4	200	\$1.00	\$200.00	
DOCK DECKING	1/2" T&G	1000	\$1.00	\$1000.00	
DOCK TRIM	1x4	100	\$1.00	\$100.00	
DOCK FASTENERS	1/2" GALV	1000	\$0.50	\$500.00	
DOCK ANCHORS	1/2" GALV	100	\$10.00	\$1000.00	
DOCK BRACKETING	1/2" GALV	50	\$2.00	\$100.00	
DOCK JOISTS	2x4	200	\$1.00	\$200.00	
DOCK DECKING	1/2" T&G	1000	\$1.00	\$1000.00	
DOCK TRIM	1x4	100	\$1.00	\$100.00	
DOCK FASTENERS	1/2" GALV	1000	\$0.50	\$500.00	
DOCK ANCHORS	1/2" GALV	100	\$10.00	\$1000.00	
DOCK BRACKETING	1/2" GALV	50	\$2.00	\$100.00	
DOCK JOISTS	2x4	200	\$1.00	\$200.00	
DOCK DECKING	1/2" T&G	1000	\$1.00	\$1000.00	
DOCK TRIM	1x4	100	\$1.00	\$100.00	
DOCK FASTENERS	1/2" GALV	1000	\$0.50	\$500.00	
DOCK ANCHORS	1/2" GALV	100	\$10.00	\$1000.00	
DOCK BRACKETING	1/2" GALV	50	\$2.00	\$100.00	
DOCK JOISTS	2x4	200	\$1.00	\$200.00	
DOCK DECKING	1/2" T&G	1000	\$1.00	\$1000.00	
DOCK TRIM	1x4	100	\$1.00	\$100.00	
DOCK FASTENERS	1/2" GALV	1000	\$0.50	\$500.00	
DOCK ANCHORS	1/2" GALV	100	\$10.00	\$1000.00	
DOCK BRACKETING	1/2" GALV	50	\$2.00	\$100.00	
DOCK JOISTS	2x4	200	\$1.00	\$200.00	
DOCK DECKING	1/2" T&G	1000	\$1.00	\$1000.00	
DOCK TRIM					

ONE PIECE HEAVY DUTY 6' X 12' FLOATING DOCK

KIT INCLUDES	QTY
INSIDE CORNER, HL-IC	4
JOIST ANGLE, HL-A	8
FLOATS, F-2416	4
ALL HARDWARE, GALV.	
BUILD/INSTALL MANUALS	
KIT PRICE	\$ 599.00
APPROX CUSTOMER WOOD COST \$150.00	
KIT OPTIONS:	
RUB RAIL/ CORNER BUMPERS	117.00
VINYL DECKING	563.00
DELUXE VINYL DECKING (INCL. FACIA MATL)	636.00
PIPE HOLDER KIT (2)	34.00
TIE OFF MALES TEES (2)	18.00
SPUD PIPES, 10' LG (2)	150.00

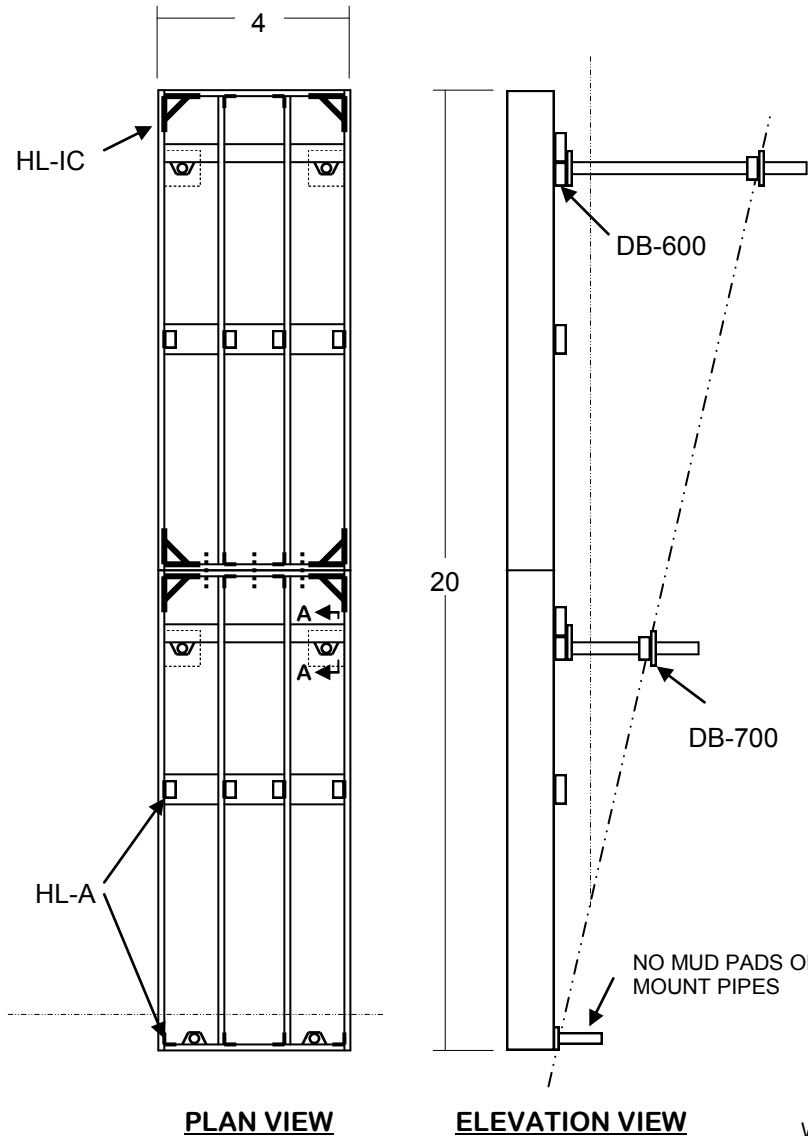


KIT # 612FL-STD-P3



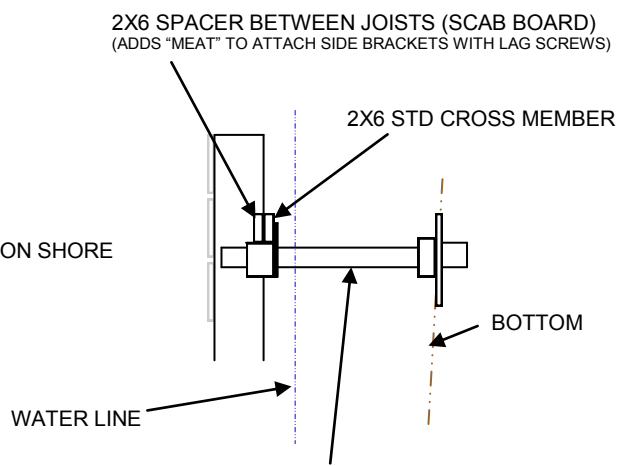
20' STRAIGHT PIER DESIGN—POSTS INSIDE

The most popular design for a straight pier has the support posts under the dock where they are not in the way of boats or fishing—not to mention that the overall appearance is more esthetically pleasing since the pipe is barely visible. The drawing below shows typical parts for the most rugged design.



KIT # 420FP-STD-P4

KIT INCLUDES	QTY
INSIDE CORNER, HL-IC	6
JOIST ANGLE, HL-A	18
SIDE BRACKET, DB-600	6
MUD PAD, DB-700	4
ALL HARDWARE, GALV.	
BUILD/INSTALL MANUALS	
KIT PRICE	\$ 385.00
APPROX CUSTOMER WOOD COST \$220.00	
KIT OPTIONS:	
RUB RAIL/ CORNER BUMPERS	136.00
VINYL DECKING	667.00
DELUXE VINYL DECKING (INCL. FACIA MATL)	805.00
SUPPORT PIPES, 7' LG (5)	250.00



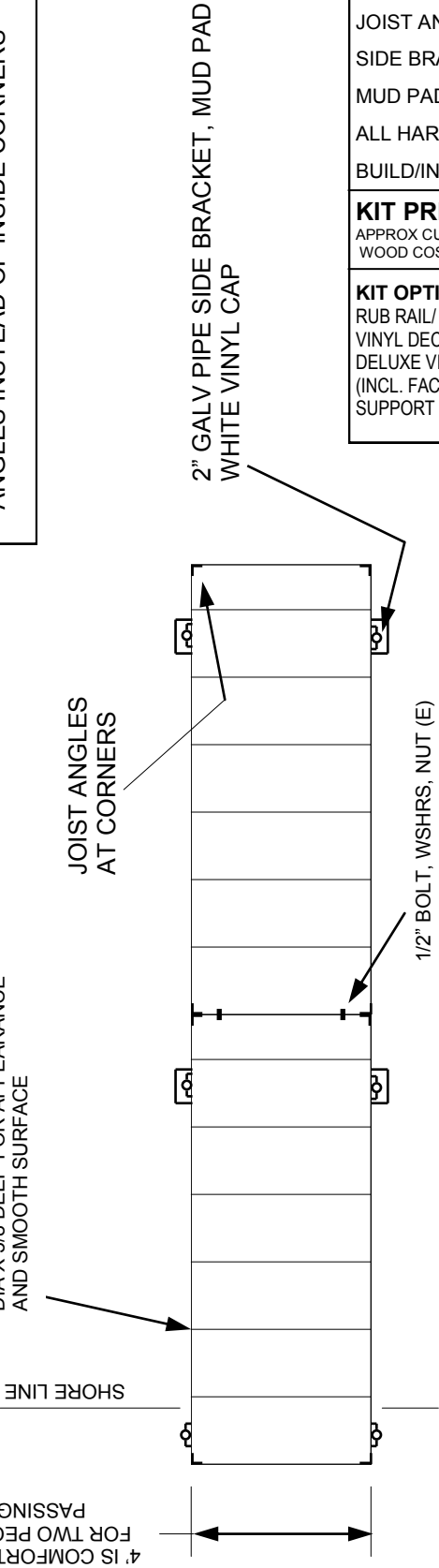
SPECIFICATIONS	
MAIN FRAME & JOISTS	2 X 8
CROSS MEMBERS	2 X 6
DECKING	OPTIONAL
SUPPORTS	2" SCH 40 GALV PIPE
	SIDE BRACKETS, MUD PADS
FACIA	OPTIONAL
RUB RAIL	OPTIONAL
CORNER BUMPERS	OPTIONAL

SECTION A-A

LIGHT DUTY 24' STRAIGHT PIER DESIGN—POSTS OUTSIDE

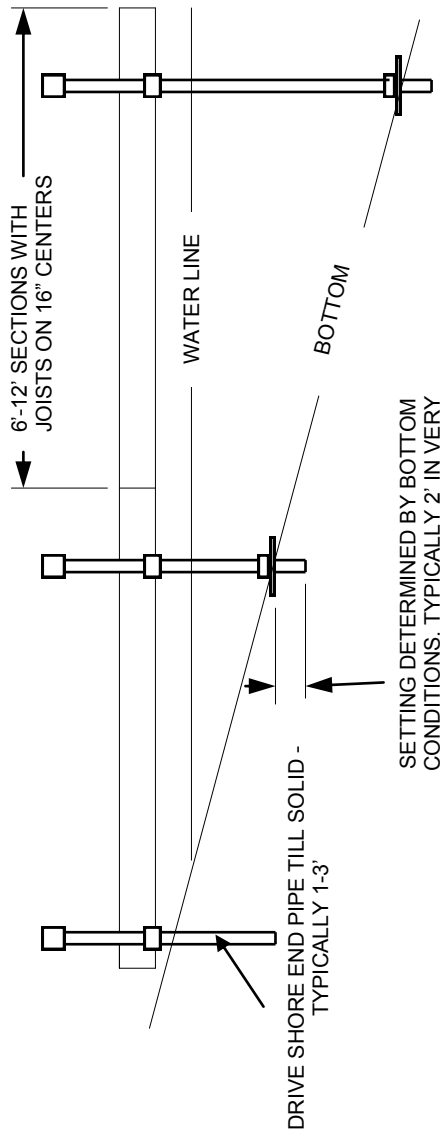
THIS LIGHTER DUTY DESIGN USES JOIST ANGLES INSTEAD OF INSIDE CORNERS

(2) 3/8 X 4 LAG SCREWS W/W SHR AT EACH INSIDE JOIST - COUNTERBORE 1 1/8 DIA X 3/8 DEEP FOR APPEARANCE AND SMOOTH SURFACE



KIT INCLUDES	QTY
JOIST ANGLE, HL-A	8
SIDE BRACKET, DB-600	6
MUD PAD, DB-700	4
ALL HARDWARE, GALV.	
BUILD/INSTALL MANUALS	
KIT PRICE	\$ 280.00
APPROX CUSTOMER WOOD COST \$225.00	
KIT OPTIONS:	
RUB RAIL/ CORNER BUMPERS	170.00
VINYL DECKING	782.00
DELUXE VINYL DECKING (INCL. FACIA MATL)	920.00
SUPPORT PIPES, 7' LG (5)	250.00

KIT # 424FP-LT-P5



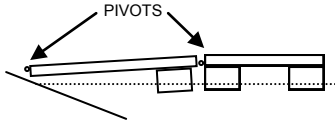
SETTING DETERMINED BY BOTTOM CONDITIONS. TYPICALLY 2' IN VERY SOFT MUD, 1"-2" IN GRAVEL.

1. ALL SIDE BRACKETS & MUD PADS HAVE A SETSCREW FOR VERTICAL ADJUSTMENT.
2. PIPES ARE NORMALLY CUT AFTER INSTALLATION TO SAME HEIGHT AND CAPPED.

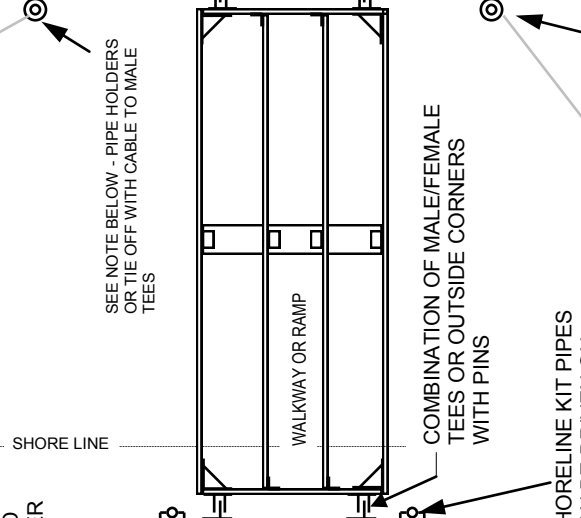
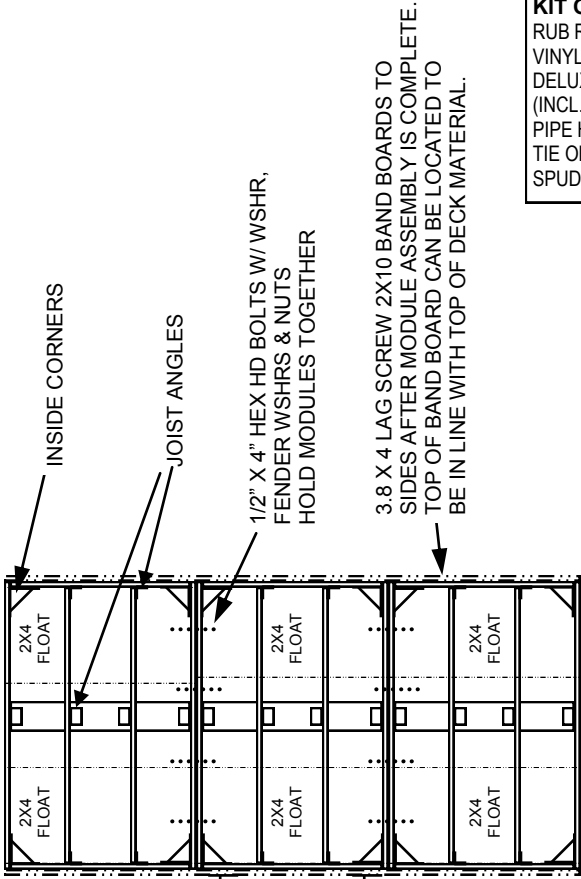
HEAVY DUTY SEMI-FLOATER & FLOATER

NO DECKING MATERIAL SHOWN

6' X 12' FLOATER CONSISTING OF (3) 4' X 6' MODULES



SCHEMATIC SIDE VIEW
(AS WATER LEVEL VARIES
MAIN DOCK IS LEVEL AND
RAMP FOLLOWS MAIN DOCK)



3" PIPE HOLDER WITH SPUD PIPES & PLATE WASHERS BOLT THRU BAND BOARD & FRAME ALLOWS FOR LESS THAN 2' OF VERTICAL TRAVEL. SWITCH TO MALE TEES & TIE OFF WITH CABLE FOR MORE VERTICAL TRAVEL.

2'X4' FLOATS, LAG SCREW TO BOTTOM OF FRAME.

WATER LINE

BOTTOM

ONE FLOAT WILL USUALLY SUFFICE FOR A WALKWAY UP TO 10' LONG. CONSIDER (2) FLOATS FOR LONGER THAN 10' WALKWAYS.

NOTE
THIS MAIN 6X12 DOCK USES (6) 2X4X16 FLOATS. ONLY (4) ARE ACTUALLY REQUIRED TO FLOAT THIS DOCK (AS ILLUSTRATED ON P. 4). CENTER FLOATS ALLOW CENTER SECTION TO FLOAT INDEPENDENTLY FOR EASE OF INSTALLATION.

KIT # 612FL-HD-SFWLK-P6

KIT PRICE \$ 1,499.00
(INCLUDING RAMP)

APPROX CUSTOMER WOOD COST \$340.00

KIT OPTIONS:

RUB RAIL/ CORNER BUMPERS	120.00
VINYL DECKING	942.00
DELUXE VINYL DECKING (INCL. FACIA MATL)	1130.00
PIPE HOLDER KIT (2)	34.00
TIE OFF MALES TEES (2)	18.00
SPUD PIPES, 10' LG (2)	150.00

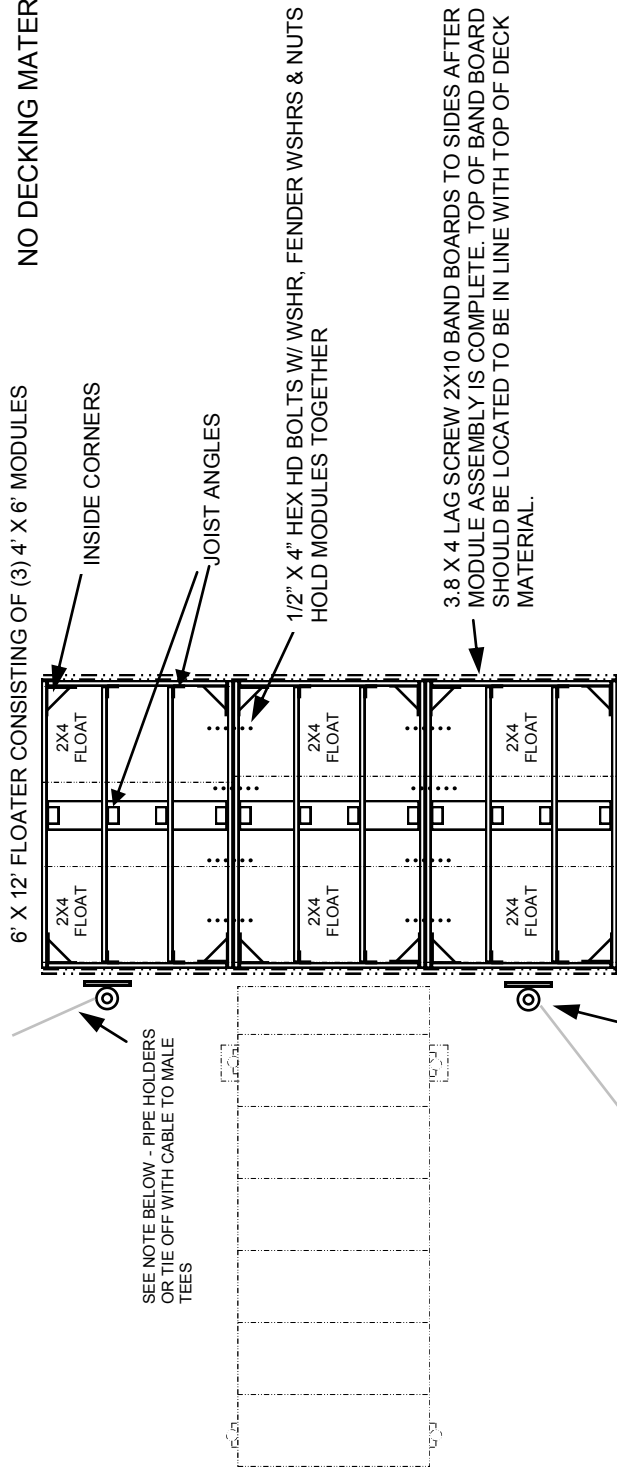
KIT INCLUDES

QTY

INSIDE CORNER, HL-IC	16
JOIST ANGLE, HL-A	32
SIDE BRACKET, DB-600	2
MALE TEE, HL-SM	4
FEMALE TEE, HL-SF	4
PIVOT PIN, B-PIN	4
FLOAT, F-2416	7
PLATE WASHER, HL-W	4
ALL HARDWARE, GALV.	
BUILD/INSTALL MANUALS	

HEAVY DUTY FIXED WALKWAY & FLOATER

NO DECKING MATERIAL SHOWN



6' X 12' FLOATER CONSISTING OF (3) 4' X 6' MODULES

INSIDE CORNERS

JOIST ANGLES

1/2" X 4" HEX HD BOLTS W/ WSHR, FENDER WSHRS & NUTS HOLD MODULES TOGETHER

3.8 X 4 LAG SCREW 2X10 BAND BOARDS TO SIDES AFTER MODULE ASSEMBLY IS COMPLETE. TOP OF BAND BOARD SHOULD BE LOCATED TO BE IN LINE WITH TOP OF DECK MATERIAL.

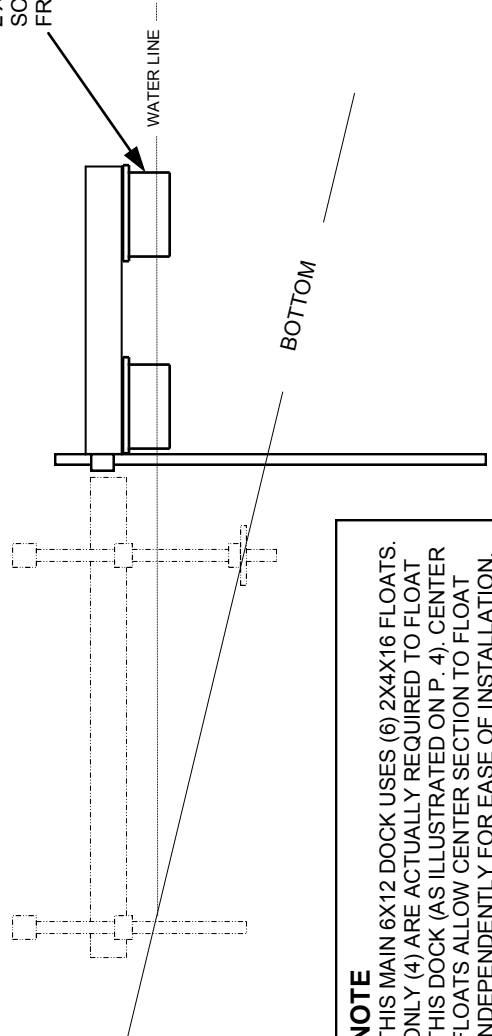
SEE NOTE BELOW - PIPE HOLDERS OR TIE OFF WITH CABLE TO MALE TEES

3" PIPE HOLDER WITH SPUD PIPES & PLATE WASHERS BOLT THRU BAND BOARD & FRAME ALLOWS FOR LESS THAN 2' OF VERTICAL TRAVEL. SWITCH TO MALE TEES & TIE OFF WITH CABLE FOR MORE VERTICAL TRAVEL.

CABLE

SEE PAGE 26 FOR FIXED WALKWAY

2X4' FLOATS, LAG SCREW TO BOTTOM OF FRAME.



NOTE
THIS MAIN 6X12 DOCK USES (6) 2X4X16 FLOATS. ONLY (4) ARE ACTUALLY REQUIRED TO FLOAT THIS DOCK (AS ILLUSTRATED ON P. 4). CENTER FLOATS ALLOW CENTER SECTION TO FLOAT INDEPENDENTLY FOR EASE OF INSTALLATION.

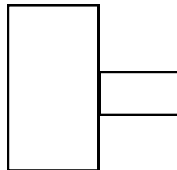
KIT # 612FL-HD-P7

KIT INCLUDES	QTY
INSIDE CORNER, HL-IC	12
JOIST ANGLE, HL-A	24
FLOAT, F-2416	6
ALL HARDWARE, GALV.	
BUILD/INSTALL MANUALS	
KIT PRICE	\$ 1,090.00
APPROX CUSTOMER WOOD COST	\$186.00
KIT OPTIONS:	
RUB RAIL/ CORNER BUMPERS	125.00
VINYL DECKING	553.00
DELUXE VINYL DECKING (INCL. FACIA MATL)	647.00
PIPE HOLDER KIT (2)	34.00
TIE OFF MALES TEES (2)	18.00
SPUD PIPES, 10' LG (2)	150.00

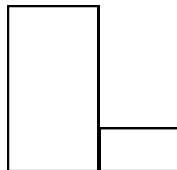
OTHER COMMON DOCK CONFIGURATIONS



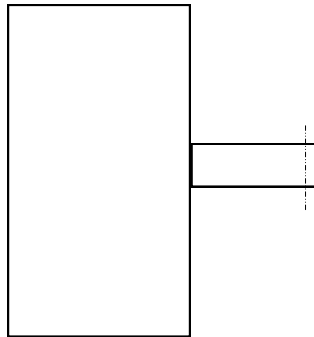
STRAIGHT
PIER



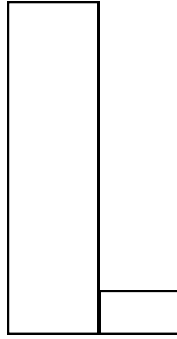
SMALL
T-SHAPE



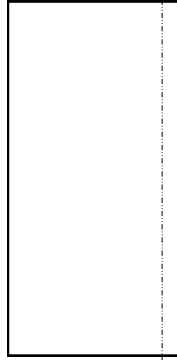
SMALL
L-SHAPE



LARGE
T-SHAPE



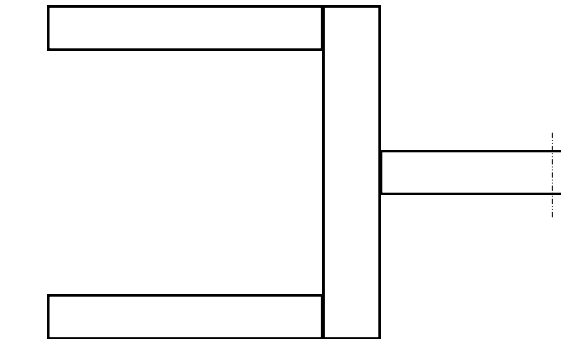
WIDER
L-SHAPE



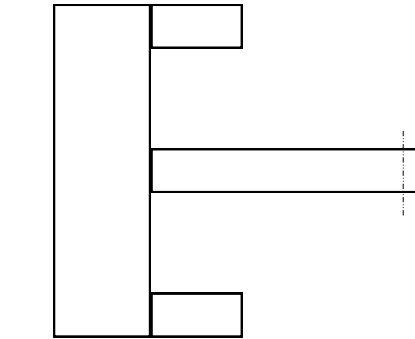
LARGER
PATIO
DOCK



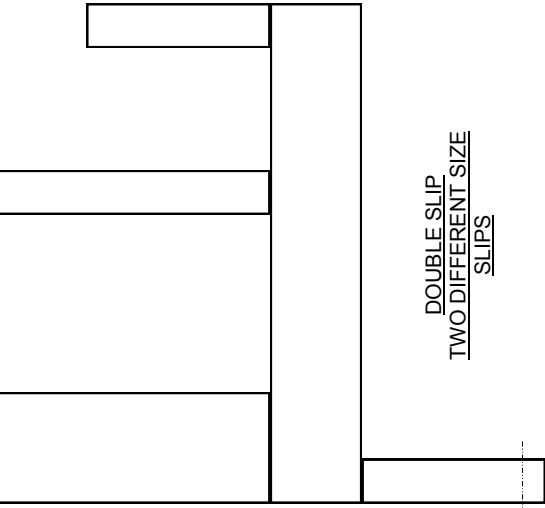
SLIP DOCK
WIDER
FINGER



SLIP DOCK



T-SHAPE
TWO SHORE
SIDE FINGERS



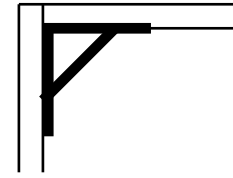
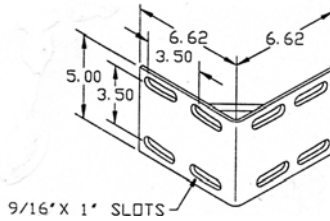
DOUBLE SLIP
TWO DIFFERENT SIZE
SLIPS

GALVANIZED STEEL DOCK HARDWARE

INSIDE CORNER, HL-IC

Corner gusset adds significant strength. Add plate washers or backup plates to sandwich wood.

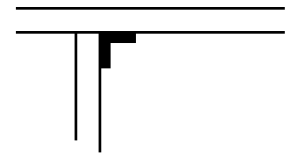
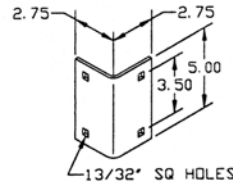
5# **\$9.30**



JOIST ANGLE, HL-A

Use to add strength where joists meet band boards. Consider plate washers on opposite side to sandwich wood.

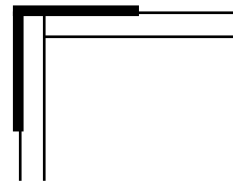
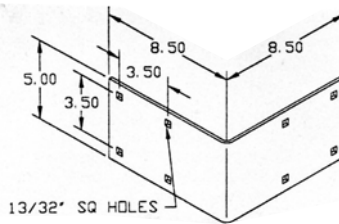
1 1/2# **\$3.15**



OUTSIDE CORNER, HL-OCE

Use at end of fingers or docks. Good for swim platforms.

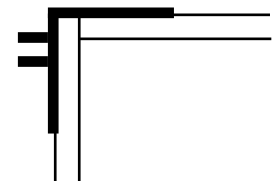
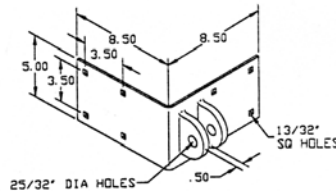
4 1/2# **\$11.66**



OUTSIDE CORNER FEMALE, HL-OCF

Has 1/2" tabs with 3/4" hole for pivot pin where sections need to pivot. Use with HL-OCM or HL-SM plus connector pin B-PIN.

6 1/2# **\$18.21**



OUTSIDE CORNER MALE, HL-OCM

Has 1/2" tab with 3/4" hole for pivot pin where sections need to pivot. Use with HL-OCF or HL-SF plus connector pin B-PIN

5 1/2# **\$15.61**

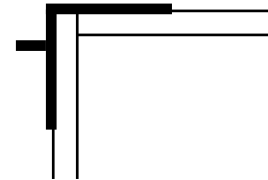
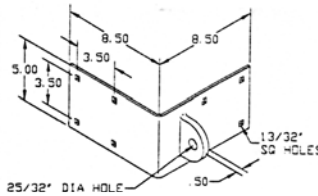
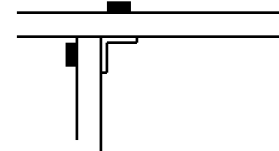
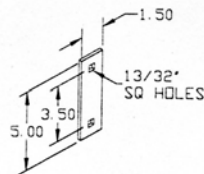


PLATE WASHER, HL-W

Used with angles, corners and tees to sandwich wood wherever possible

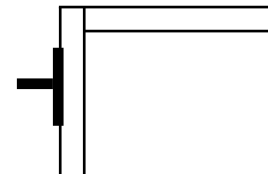
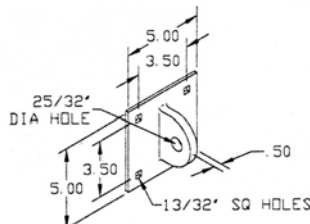
1/2# **\$1.20**



MALE T, HL-SM

Has 1/2" tab with hole for 3/4" pin. Use with HL-OCF or HL-SF and connector pin B-PIN. Also good for a tie-off for cable.

1/2# **\$9.08**



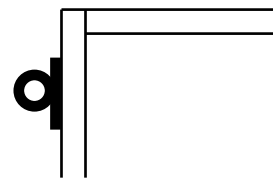
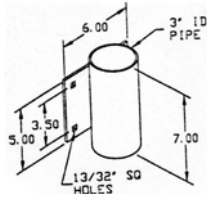
PARTS ARE MINIMUM 7 GAGE HOT DIPPED GALVANIZED STEEL.

SEE PAGE 17 FOR FASTENERS

GALVANIZED STEEL DOCK HARDWARE

3" PIPE HOLDER, PL-3

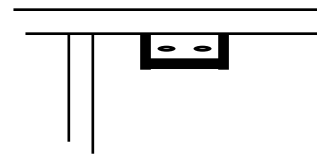
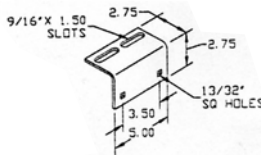
Bolts to side of dock for 2" spud pipes to hold floating docks in place. Back up with plate washers.



5# **\$18.18**

CLEAT ANGLE, HL-CA

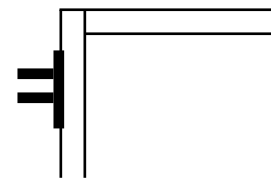
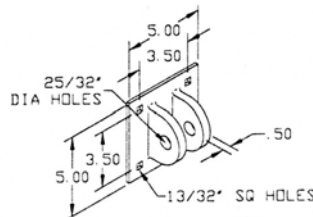
Bolts to band board instead of deck surface for added cleat strength.



1 1/2# **\$4.75**

FEMALE T, HL-SF

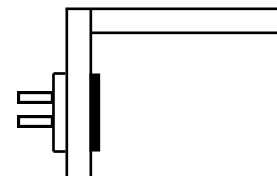
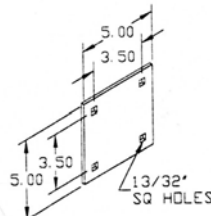
Has 1/2" tabs with hole for 3/4" pin. Use with HL-OCM or HL-SM and connector pin B-PIN.



1/2# **\$11.67**

BACKUP PLATE, HL-B

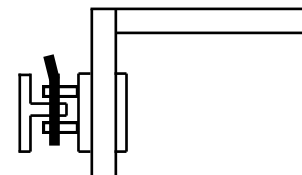
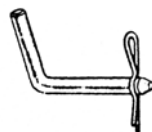
Used to sandwich wood when using HL-SM or HL-SF.



1 1/2# **\$4.71**

CONNECTOR PIN, B-PIN

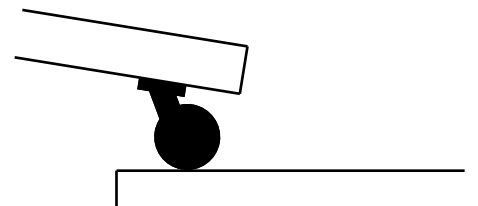
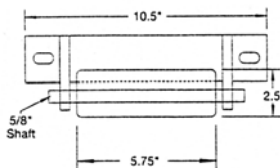
Used at pivots with Tees or Outside Corners. Includes hitch pin for quick connect. 3/4" x 3 1/2"



1/2# **\$3.96**

ROLLER ASSY, H-RA

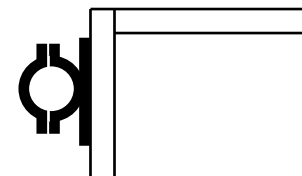
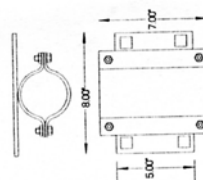
Bolts to bottom of ramp to allow it to roll on a floating dock. Need at least 2. 2 1/2" Solid rubber rollers. A pair will hold over 800#.



5# **\$29.43**

3" SPLIT PIPE HOLDER, P-3S

Bolts to side of dock for 2" spud pipes to hold floating docks. Back up with plate washers. Split design allows for easy removal of dock from spud pipes.

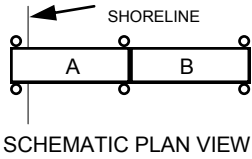


8# **\$22.69**

PARTS ARE MINIMUM 7 GAGE HOT DIPPED GALVANIZED STEEL.

SEE PAGE 17 FOR FASTENERS

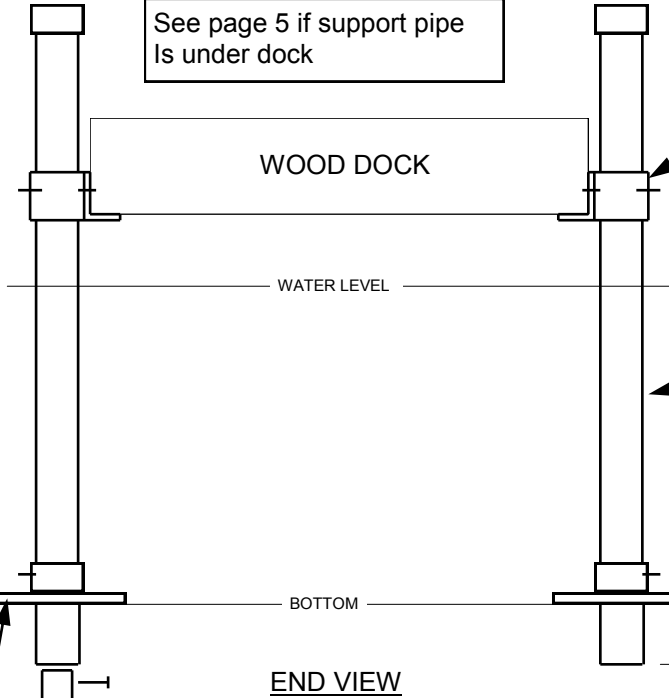
WOOD FIXED PIER (STATIONARY DOCK) PARTS



VINYL CAP, PC2
 Slides on 2" sch. 40 pipe. Dresses up appearance of pipes and covers uneven ends. White vinyl
 .0.3# **\$3.75**

See page 5 if support pipe is under dock

SIDE BRACKET, DB-600
 Slides on 2" sch. 40 pipe. Setscrew allows for adjustment and leveling. Slots in side flange allow for bolting to structure.
 5.0# **\$17.95**



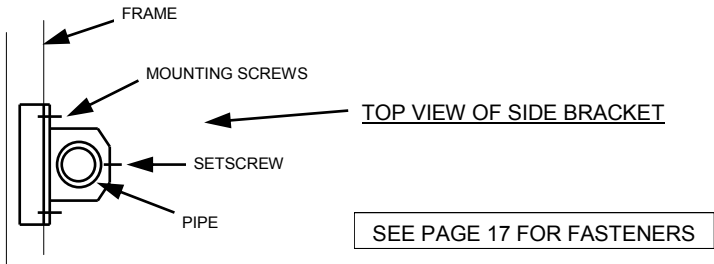
GALVANIZED PIPE, GP-2
 2" Schedule 40 comes in 7' lengths.
 35# **\$50.00**

SET THIS DIMENSION PRIOR TO POUNDING IN PIPES. WHERE BOTTOM IS SOFT (YOU SINK IN 6" IN BARE FEET), 1-3' IS TYPICAL. WHERE BOTTOM IS SAND OR GRAVEL (YOU DON'T SINK IN AT ALL IN BARE FEET), THIS DIMENSION IS AS SMALL AS 0-4".

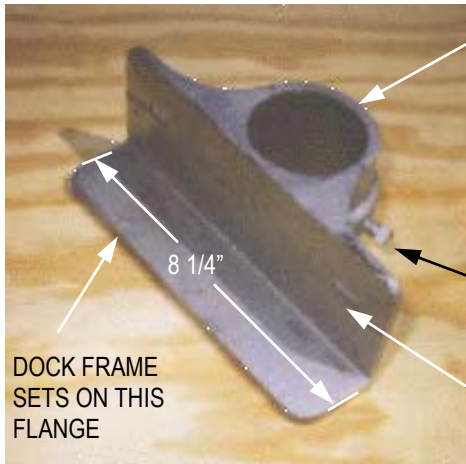
AUGER, DB-400 (OPTIONAL)
 Slides into 2" sch. 40 pipe. Pin can be added to hold auger securely in pipe (you will need to drill thru pipe and auger). Seldom used in this area but good if you need to remove pipes in winter.
 4.1# **\$17.04**

INSTALLATION TIPS:
 If lake is in pool, use floatation to maneuver dock. You can use old barrels or rent our floats.
 For appearance sake, many customers cut pipes to a uniform height when finished with installation of their dock. However, load the dock down as much as possible to avoid any sinking later before cutting pipes (or wait till after the dock has seen substantial service). DO NOT USE ELECTRIC AROUND WATER - USE A CORDLESS RECIPROCATING SAW WITH METAL BLADE OR HACKSAW.
 Mud pads significantly reduce the necessity to pound pipes extremely deep. Once the mud pad bottoms out, You won't be able to pound it much more.
 We pound in posts with a pasture fence post pounder and/or sledge hammer. Longer pipes may not be reachable with a sledge hammer alone.
 Shoreline mounting (See Schematic) consists of side brackets and short pipes driven into ground (no mud pads). This is usually done after entire pier is placed and leveled. See Schematic. After placing and leveling A, B is bolted to A on the shore end of B.

MUD PAD, DB-700
 Slides on 2" sch. 40 pipe. Setscrew allows for adjustment depending on bottom conditions. 9" Square.
 7.8# **\$24.50**



STATIONARY DOCK (FIXED PIER) PARTS (CAST IRON MATERIAL)



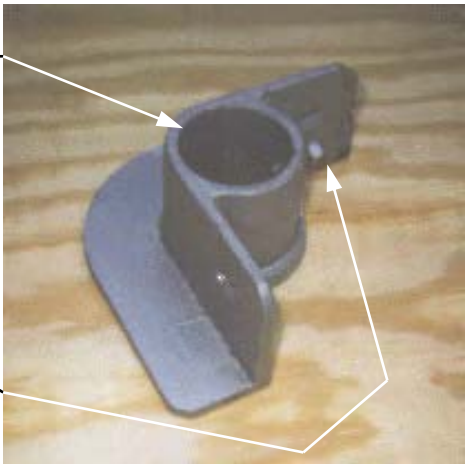
**DB-600
SIDE BRACKET**
SUPPORTS FRAME OF FIXED
PIER WITH 2" PIPES. SET SCREW
ALLOWS FOR VERTICAL
ADJUSTMENT TO LEVEL DOCK.
\$17.95
5.0 LBS

HOLE FOR 2"
SCH. 40 PIPE

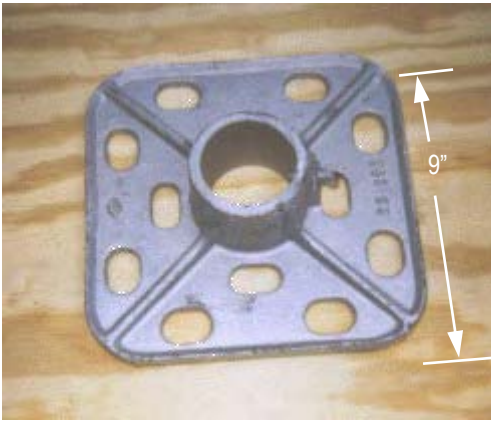
SET SCREW

SLOTS TO SCREW
INTO FRAME

SEE PAGE 17 FOR
FASTENERS



**DB-500
CORNER BRACKET**
SUPPORTS FRAME OF FIXED
PIER WITH 2" PIPES AT AN INSIDE
CORNER. SET SCREW
ALLOWS FOR VERTICAL
ADJUSTMENT TO LEVEL DOCK.
\$29.48
5.2 LBS



**DB-700
MUD PAD**
MOUNTS ON BOTTOM OF 2" PIPES
FOR SOFT BOTTOMS. ADDS
STABILITY AND MINIMIZES HAVING
TO DRIVE PIPES INTO BOTTOM.
\$24.50
7.8 LBS



**DB-400
AUGER**
MOUNTS ON END OF 2" PIPE WITH A
THRU PIN. ALLOWS SCREWING
PIPE INTO BOTTOM FOR EASE OF
INSTALLATION AND REMOVAL..
CUSTOMER DRILLS THRU PIPE &
AUGER FOR PIN INSERTION. DRILL
HOLE AT TOP OF PIPE TO INSERT A
BAR FOR HANDLE OR USE LARGE
PIPE WRENCH.
\$17.04
4.1 LBS

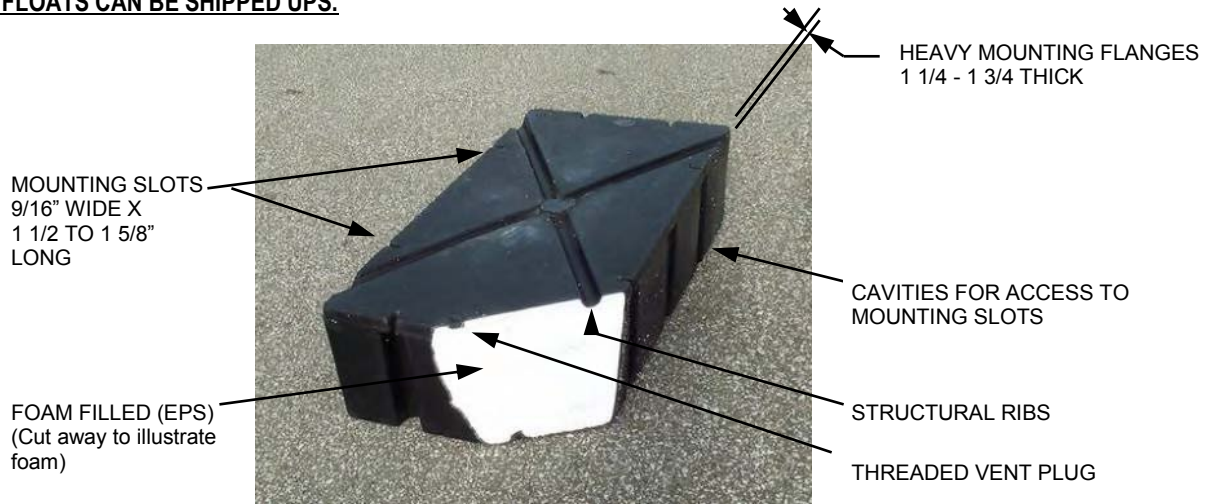
FLOATS

ACE FLOATS CARRY A TWELVE YEAR WARRANTY AND MEET OR EXCEED ALL ARMY CORPS OF ENGINEERS AND FISH & WILDLIFE REGULATIONS. THEY HAVE A POLYETHYLENE SHELL WITH A MINIMUM WALL THICKNESS OF .150 AND ARE COMPLETELY FILLED WITH EXPANDED POLYSTYRENE FOAM WITH A DENSITY OF 1-1.5 POUNDS PER CUBIC FOOT. ALL FLOATS FEATURE A FLAT TOP CONFIGURATION, AIR PRESSURE RELIEF VALVE AND HEAVY DUTY MOUNTING FLANGE. THEY ARE 100% IMPERVIOUS TO WATER AND GASOLINE. NORMAL MOUNTING CONSISTS OF LAG SCREWS WITH WASHERS THRU THE SLOTS INTO THE BOTTOM OF THE WOOD FRAME.

STANDARD SIZES

MODEL	SIZE (WxLxH)	SHIP WEIGHT	LBS/ FLOAT RATING	CUBIC FEET	PRICE
F-2312	2' X 3' X 12"	26	335	6.0	117.67
F-2316	2' X 3' X 16"	31	440	8.0	127.67
F-2412	2' X 4' X 12"	32	450	8.0	136.40
F-2416	2' X 4' X 16"	38	590	10.7	158.35

ALL OF THESE FLOATS CAN BE SHIPPED UPS.



ESTIMATING THE NUMBER OF FLOATS REQUIRED

As a general rule of thumb, we use a total live load of 25 pounds per square foot for recreational docks*. Multiply the square footage of your floating dock by 25 for the total load to determine the number of floats required. LBS/Float rating times the number of floats should equal or exceed that number. When the floats are properly sized, a typical dock will only have 4-6" of the float height submerged.

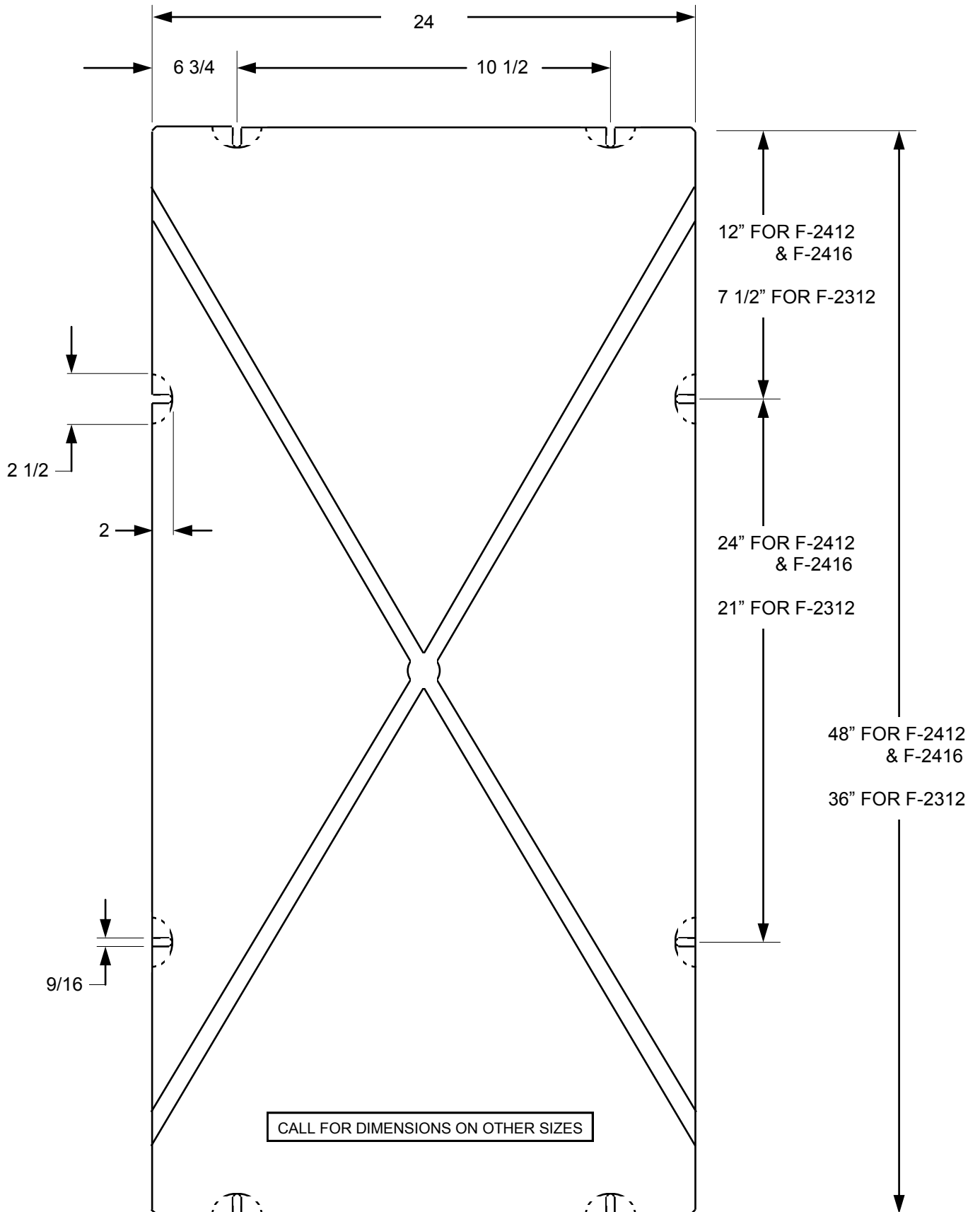
EXAMPLE: 8x10 FLOATING DOCK = 80 SQUARE FEET
80 SQUARE FEET X 25 LBS/SF = 2000 LBS

(4) 2X4X12" FLOATS = 440 X 4 = 1760 LBS (NOT ENOUGH)

(4) 2X4X16" FLOATS = 590 X 4 = 2360 LBS (SUFFICIENT)

*Commercial and institutional docks often will be estimated at 30-35 pounds per square foot.

STANDARD FLOAT DIMENSIONS



COMPLETE FLOAT PRICE LIST

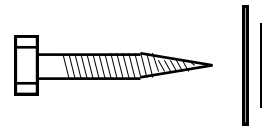
These Ace floats are the finest floats available today. They all carry a 12 year warranty. They have a minimum .150 wall thickness and are rotational molded from virgin food grade materials with UV inhibitors assuring long life. The polyethylene shell with molded mounting slots, is unaffected by gasoline, oil, salt water and "critters". The floats are completely foam filled with 1 to 1.5 density EPS. All floats feature a flat top configuration, air pressure relief vent and heavy duty mounting flange. They meet Corps of Engineer Regulation #36 CFR Part 327, the Hunt Absorption test and the Hunt falling dart test. NOTE: New sizes are constantly being added. Call for additional sizes.

MODEL	SIZE	SHPG WT.	SHIPS UPS	LBS/FLOAT RATING	PRICE	
F-1420	1'X4'X20"	28	YES	340	120.46	
F-238	2'X3'X8"	23	YES	230	101.50	
F-2312	2'X3'X12"	27	YES	335	117.67	
F-2316	2'X3'X16"	31	YES	440	127.67	
F-2320	2'X3'X20"	36	YES	540	137.18	
F-248	2'X4'X8"	26	YES	310	108.13	
F-2412	2'X4'X12"	32	YES	450	136.40	
F-2416	2'X4'X16"	38	YES	590	158.35	
F-2420	2'X4'X20"	44		725	175.65	
F-2424	2'X4'X24"	50		860	204.59	
F-3412	3'X4'X12"	44		685	178.83	
F-3416	3'X4'X16"	54		900	208.48	
F-3420	3'X4'X20"	74		1110	239.90	
F-3424	3'X4'X24"	74		1315	268.57	
F-4412	4'X4'X12"	61		920	223.54	
F-4416	4'X4'X16"	71		1215	262.81	
F-4420	4'X4'X20"	81		1500	300.76	
F-4424	4'X4'X24"	83		1775	343.99	
F-4512	4'X5'X12"	70		1155	289.07	
F-4516	4'X5'X16"	84		1525	322.66	
F-4520	4'X5'X20"	98		1885	367.53	
F-4524	4'X5'X24"	114		2235	407.32	
F-3612	3'X6'X12"	68		1035	256.66	
F-3616	3'X6'X16"	80		1365	305.29	
F-3620	3'X6'X20"	92		1685	346.61	
F-3624	3'X6'X24"	105		1995	377.10	
F-4612	4'X6'X12"	85		1390	311.53	
F-4616	4'X6'X16"	100		1835	372.23	
F-4620	4'X6'X20"	115		2270	421.27	
F-4624	4'X6'X24"	120		2695	461.38	
F-4812	4'X8'X12"	112		1855	398.74	
F-4816	4'X8'X16"	134		2455	476.63	
F-4820	4'X8'X20"	156		3040	539.01	
F-4824	4'X8'X24"	160		3615	641.31	
Commonly used as crew dock floats	F-207208	20"X72"X8"	35	YES	380	162.25
	F-209610	20"X96"X10"	48		620	211.73
	F-387812	38"X78"X12"	70		1100	289.33
	F-427212	42"X72"X12"	70		1210	282.92
	F-427216	42"X72"X16"	83		1600	331.07

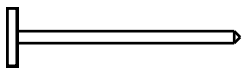
FASTENERS



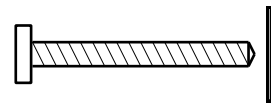
CARRIAGE BOLT ASSEMBLY B-CB2
Use: Most dock hardware
 3/8 x 2/12 Bolt, washer, nut **\$0.60**



LAG SCREW ASSEMBLY BL-4
Use: Floats
 3/8 x 4 Screw, 1/2 wshr, 3/8 wshr, nut **\$0.78**



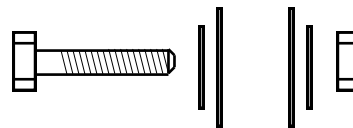
STAINLESS NAILS SST-N
Use: Rub rail
 Pkg of 25 **\$4.75**



STAINLESS SCREW ASSY SST-S
Use: Rub rail
 Phillips screw, washer, Pkg of 25 **\$12.75**



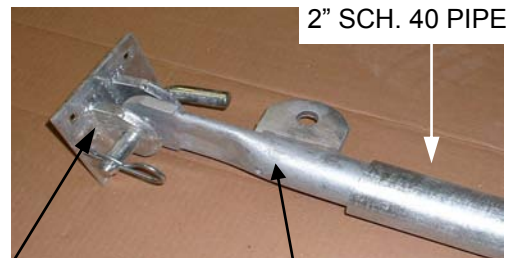
FLAT HEAD SCREW ASSY B-CL5
Use: Nylon cleats
 5/16 x 5 Screw, washer, nut **\$3.90/Pair**



HEX BOLT ASSEMBLY HB-4
Use: Bolting modules together
 1/2 x 4 Bolt, (2) 1/2 fen wshr, (2) wshr **\$3.25**



CARRIAGE BOLT ASSY B-CB2.5
Use: Fixed pier side brackets
 5/16 x 2/12 Bolt, washer, nut **\$0.53**



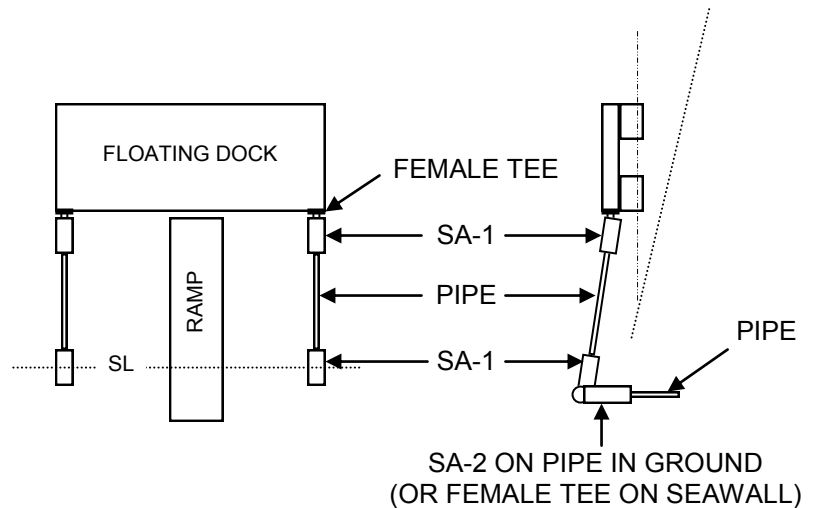
TEE MOUNTED TO DOCK **STIFF ARM FITTING (SA-1)**

STIFF ARM FITTINGS H-SA1 & H-SA2

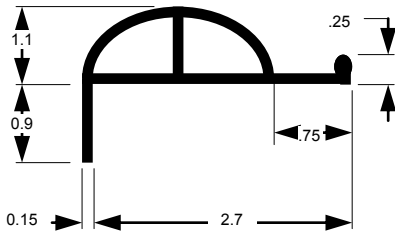
Stiff arms are a convenient way to hold a floating dock in place without spud pipes, cables or deadmen. They can be used for floaters that are less than 20 feet from shore. Fittings slide into 2" pipe and are thru bolted to the pipe. Fittings on the shore end typically attach to 2" pipe driven into the ground or cemented in.

\$28.75 PER FITTING*

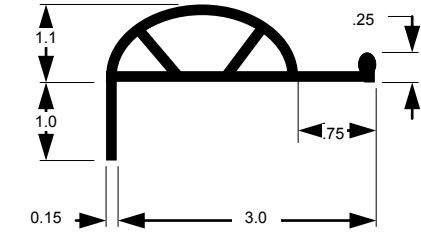
*Price does not include tee, pipe or thru bolt. SA-1 has a male end. SA-2 has a female end.



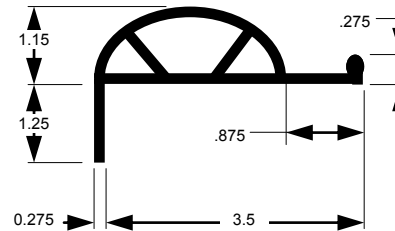
RUB RAIL



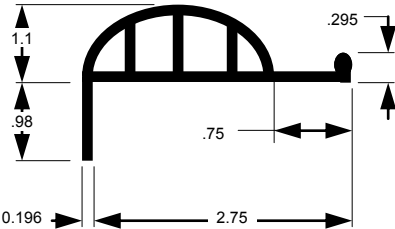
RR-5000
White, 10' Length
\$18.65



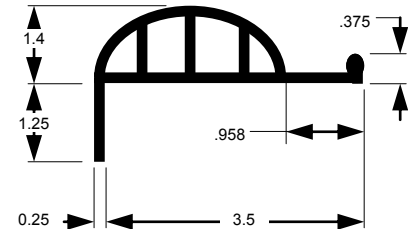
RR-5001
White, 10' Length
\$19.05



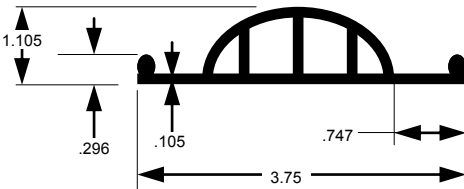
RR-5002
White, 10' Length
\$32.40



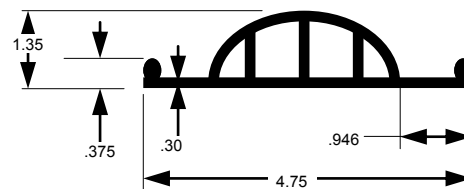
RR-5005
White, 10' Length
\$34.80



RR-5006
White, 10' Length
\$36.90



RR-5007 (Vertical)
White, 10' Length
\$24.58

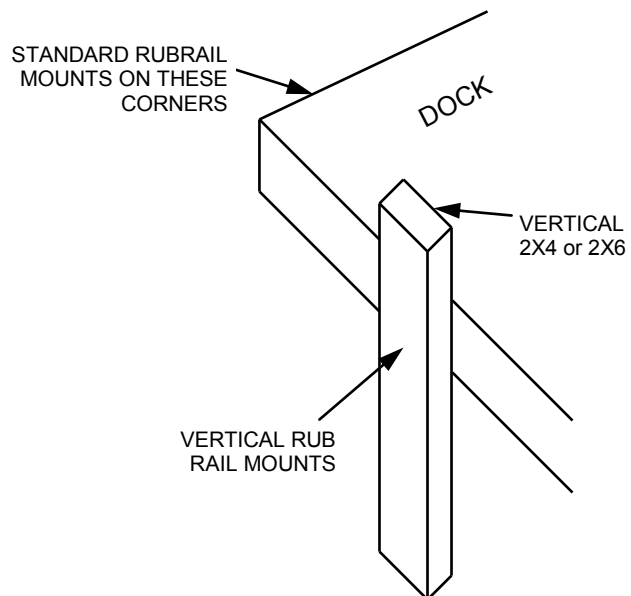


RR-5008 (Vertical)
White, 10' Length
\$42.60

This new rub rail is mono-extruded (same color all the way through). Made of flexible PVC, it will not crack, rot or deteriorate when exposed to extreme temperatures. It is unaffected by oil, gas or saltwater and has UV inhibitors to prevent yellowing and deterioration from sunlight. There is even a fungicide added to the formulation. Besides all that, you can't beat the price!

Attach with stainless nails or screws every 1-1.5 feet.

Vertical rub rail commonly mounts on a vertical 2x6 that is mounted on the side of the dock. This provides protection when there are significant water level changes, heavy wakes or different boat freeboard heights.



RR-5007



RR-5001

SEE PAGE 17 FOR FASTENERS

ACCESSORIES



RAIL POST LIGHT
 12V LIGHT FOR TOP OF
 VINYL OR WOOD POSTS.
 WHITE, BLACK OR NATURAL.
 5/12 SQ X 6 HIGH
 White, 12v **\$37.50**
 Tan, 12v **\$42.50**
 ADD \$14.00 FOR SOLAR



PIPE CAP
 FITS 1.5 OR 2" SCH 40
 PIPE
 FOR FINISHED LOOK.
PC-2 \$3.75
PC-1 \$3.25



CORNER BUMPER RR-CB
 MADE FROM TOUGH MARINE
 GRADE VINYL.
\$15.00



CORNER BRACKET



12" WHEEL

DOCK WHEELS DW-12

12" DOCK WHEELS MAKE DOCKING EASY WHEN HIGH WINDS OR CURRENT MAKE IT DIFFICULT. BRACKET IS MADE OF 1/4" HOT DIPPED GALVANIZED STEEL AND CENTER POST IS 1 1/2" SCHEDULE 40 PIPE. WHEELS HAVE A MOLDED HUB AND ARE MADE OF TOUGH MARINE GRADE VINYL. SPECIFY CORNER OR SIDE MOUNTING BRACKET

DW-12 \$75.04

CLEATS



DISAPPEARING CLEAT
 DCLB BLACK 6" \$16.75
 DCLW WHITE 6" \$16.75



BLACK NYLON
 C-8N 8" \$5.25
 C-10N 10" \$9.25



ROLL-A-MODULE WHEEL
 24" X 8" WIDE WHEEL USES
 1 1/2" GALV PIPE FOR AXLE.
 USE FOR ROLLING DOCKS OR
 BOAT LIFTS IN AND OUT.
\$49.23

FIBERGLASS DOCK BOXES

STANDARD	W	D	H	PRICE
625 XL	71	22	24.25	537.00
725 2XL	86	22	24.25	625.00
825 ROD BOX	96	22	24.25	690.00
825 STD	96	22	24.25	690.00
426 LARGE	44.25	26.25	27.5	435.00
700 JUMBO	72	26.5	27.5	663.00
323 MAXI	39.5	19.75	21.5	363.00

LOW PROFILE	W	D	H	PRICE
718	85	20	18	473.00
618 (SHIPS UPS)	72	20	18	435.00
518 (SHIPS UPS)	60	20	18	398.00
418 (SHIPS UPS)	48	20	18	382.00

TRIANGLE	W	D	H	PRICE
430	54.5	34.25	29.5	453.00
431	50	30	33	435.00

SPECIAL	W	D	H	PRICE
600 SEAT TOP	72	29	29	717.00
500 SEAT TOP	50	29	29	526.00
211 XSMALL (SHIPS UPS)	25	16.75	10.5	182.00
311 LOCKER (SHIPS UPS)	34	22.5	10.5	295.00
125 SAIL	150	32	24	1,580.00
612 STORAGE	71.5	28.5	14	500.00
636 STORAGE	74	38	36	1,125.00



POLISHED STAINLESS STEEL HARDWARE
HEAVY DUTY FIBERGLASS CONSTRUCTION WITH GELCOAT
LOCKABLE STAINLESS LATCHES
OPTIONAL ACCESSORIES

CUSTOM SIZE DOCK BOXES

CUSTOM SIZE DOCK BOXES ARE AVAILABLE. THEY ARE CONSTRUCTED OF TONGUE & GROOVE VINYL. THEY CAN USUALLY BE SHIPPED UNASSEMBLED VIA UPS. CALL FOR QUOTES ON CUSTOM SIZES.

FIBERGLASS DOCK STEPS (1-5 STEPS)
ALSO AVAILABLE.

QUICK RELEASE SLANTED LADDER



NO SHIN BANGING & NO "GUNK" BUILDUP

QUICK RELEASE SLANTED LADDERS ARE MADE OF HEAVY WALL (.060) SQUARE ALUMINUM TUBING WITH WHITE POWDER COATING AND COME WITH QUICK DISCONNECT HARDWARE. STEPS ARE NON-SKID 5 1/4" X 16". FASTENERS ARE 304 STAINLESS STEEL.



FOOTMAN'S LOOP ATTACHES TO DOCK

MODEL	STEPS	INCHES TO BOTTOM STEP	INSIDE WIDTH	WT. (LBS)	PRICE
L-4	4	39	15	30	\$169.00

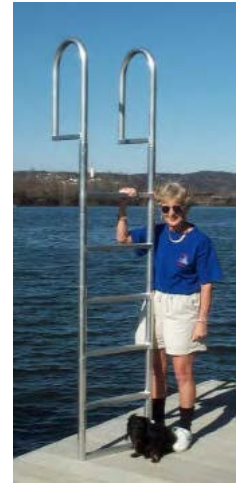
LADDERS

All pipe ladders are constructed using 6063 TS marine grade aluminum TIG welded for maximum strength. Ladder rungs are extruded with grooves for a non-skid surface. Good for fresh or salt water.

STRAIGHT PIPE LADDER

Bottom of handrail bolts to dock. 300# Capacity.
4, 5, 6 & 7 Steps.

MODEL	STEPS	INCHES TO BOTTOM STEP	INSIDE WIDTH	WT.	PRICE
L-4P	4	48	21	30	\$176.15
L-5P	5	60	21	70	\$188.49
L-6P	6	72	21	70	\$215.84
L-7P	7	84	21	70	\$238.25



SWING LADDER

Brackets mount to dock and allow ladder to swing out of water and pin in place vertically to prevent scum buildup when not in use.

4, 5, & 6 Steps.



MODEL	STEPS	INCHES TO BOTTOM STEP	INSIDE WIDTH	WT.	PRICE
L-4S	4	48	18	30	\$264.99
L-5S	5	60	18	70	\$284.22
L-6S	6	72	18	70	\$298.98

LIFT LADDER

Rung assembly slides up and out of water to prevent scum buildup when not in use.

5 & 7 Steps.

MODEL	STEPS	INCHES TO BOTTOM STEP	INSIDE WIDTH	WT.	PRICE
L-5LL	5	60	18	70	\$297.61
L-7LL	7	84	18	70	\$324.67



Roll-Easy DOCKING RAMPS

YOUR PWC OR BOAT GLIDES EASILY IN AND OUT OF THE WATER IN SECONDS. AT JUST 54 POUNDS, THE PWC MODEL IS MOST POPULAR AND MOST PORTABLE. ADJUSTABLE RAIL SPACING ASSURES THAT IT WILL HANDLE ANY PWC INCLUDING THREE SEATERS. OVERALL LENGTH IS 11 FEET WITH EXTRA 8 FOOT EXTENSIONS AVAILABLE.. STANDARD WINCH INCLUDES A 15' STRAP.

**MAKES MOORING, FUELING,
CLEANING & COVERING EASIER**

FOUR MODELS AVAILABLE

MODEL	LG.	PRICE
PWC	11'	\$699
1200#	17' 10"	\$1699
2000#	17' 10"	\$1999
2000#	17' 10"	\$3199
PONTOON		

OPTIONAL EXTENSIONS AVAILABLE FOR GRADUAL SLOPES

ALL ALUMINUM WITH STAINLESS FASTENERS

UPSABLE FOR MINIMUM FREIGHT



FLOATING PWC PLATFORMS

OUR FLOATING PWC PLATFORMS ADD TO THE ENJOYMENT OF YOUR PERSONAL WATERCRAFT. THERE ARE NO MOVING PARTS FOR TROUBLE FREE OPERATION. JUST PULL YOUR PWC ON AND WALK AWAY! MULTIPLE UNITS CAN BE EASILY LINKED TOGETHER. THE OUTSIDE SHELL IS MOLDED FROM LINEAR LOW DENSITY POLYETHYLENE AND ARE FOAM FILLED. THE STANDARD MODEL IS RATED FOR 1000# AND THE JUMBO MODEL IS RATED FOR 2000#.



**FOR 2 & AVERAGE 3 SEATERS
(1000# RATING)**

STANDARD MODEL	\$945.00
LIGHT DUTY BRKTS	INCL
OPTIONS:	
CORNER PLUG, EA.*	\$29.00
HEAVY DUTY BRKTS	\$160.00

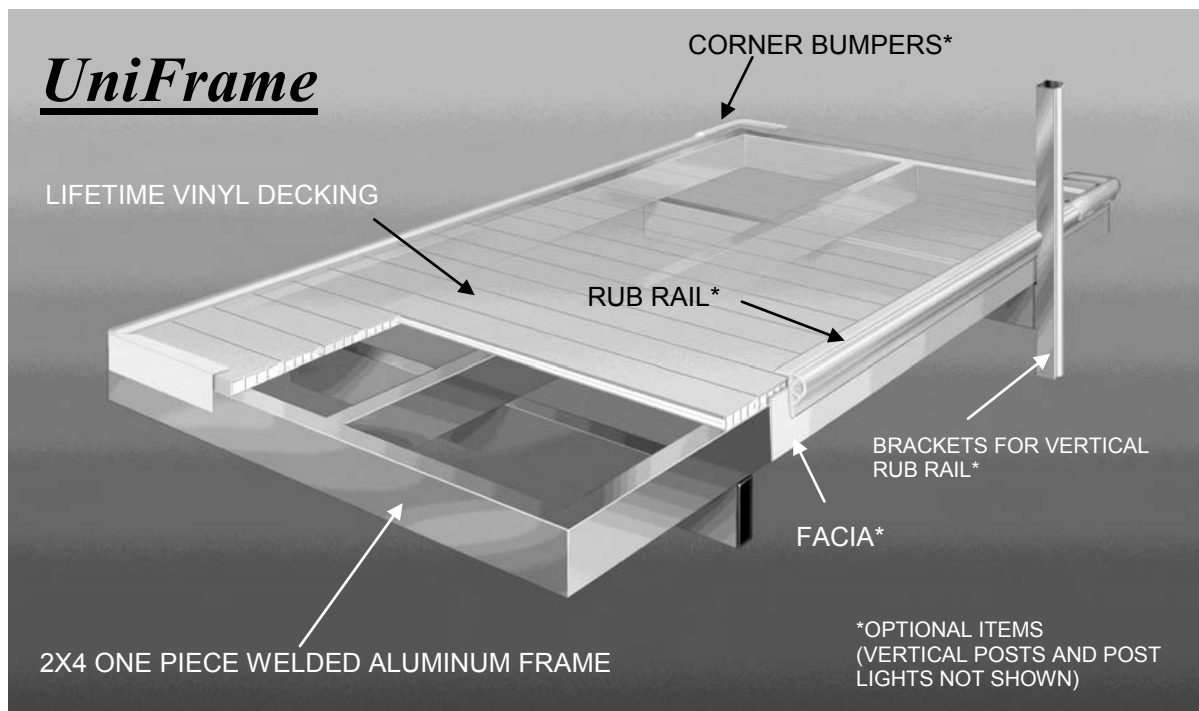
**FOR HEAVIER 3 SEATERS AND
4 SEATERS (2000# RATING)**

JUMBO MODEL	\$1,595.00
HEAVY DUTY BRKTS	\$275.00
OPTIONS:	
CORNER PLUG, EA.*	\$49.95
REPLACE BOW GD.	\$69.00

*UNITS HAVE HOLES IN EACH CORNER. OPTIONAL HOLE PLUGS CAN BE USED TO FILL THE VACANT HOLES.

UniFrame™—The Ultimate Lifetime Dock

OUR *UniFrame* DOCKS FEATURE ALL ALUMINUM WELDED FRAMES WITH LIFETIME VINYL DECKING FOR YOUR LAST AND MOST ATTRACTIVE DOCK. OPTIONS INCLUDE A BUILT IN STORAGE COMPARTMENT, SIMPLE INSTALLATION, INNUMERABLE CONFIGURATIONS, EASY MOUNTING OF ACCESSORIES INCLUDING VINYL POSTS & RAILING, 12V OR SOLAR POST LIGHTS AND PLENTY OF OTHER GOODIES. SEVERAL DECKING COLOR OPTIONS ARE ALSO AVAILABLE.



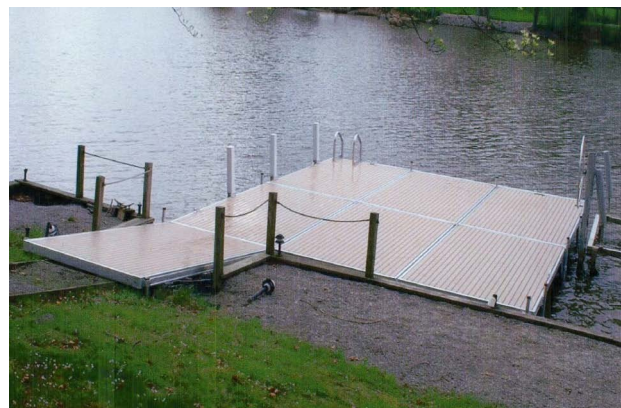
ALL ALUMINUM DOCKS

IF YOU'RE LOOKING FOR AN ATTRACTIVE, MAINTENANCE FREE DOCK TO SAVE YOUR BACK AND YOUR TIME, OUR **DOCK^{Lite}** ALL ALUMINUM DOCKS MAY BE THE ANSWER. A 4X10 DOCK WEIGHS ABOUT 130#. THEY ARE AVAILABLE WITH DECK COLORS OF SEA GREEN, EARTH SAND OR CLOUD WHITE AND COME WITH A 15 YEAR WARRANTY! ASK FOR OUR SEPARATE CATALOG OF **DOCK^{Lite}** DOCKS.

SIMPLE PIERS



CUSTOM CONFIGURATIONS



BUILDING PRODUCTS DIV
TRI-STATE PLASTICS, INC.

- 23 -

www.tristateplastics.com

859-655-8200

BOAT & PERSONAL WATERCRAFT LIFTS

PROTECT YOUR INVESTMENT

A BOAT LIFT CAN ADD YEARS OF LIFE TO YOUR BOAT BY KEEPING IT SAFELY ABOVE THE DAMAGING EFFECTS OF WAVES, ALGAE, AND FLOATING DEBRIS. WITH THE ADDITON OF A CANOPY, YOUR BOAT'S FINISH AND INTERIOR IS ALSO PROTECTED AGAINST RAIN, HAIL AND SUN.

**DOUBLE PWC
LIFT WITH
SINGLE WINCH**



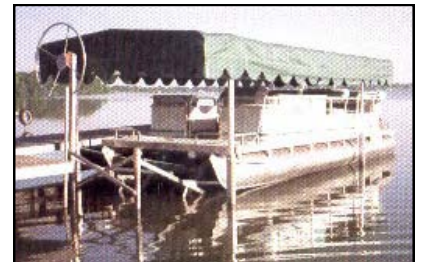
**NINE
DIFFERENT
CANOPY
COLORS**



**SINGLE PWC LIFT
CANTILEVER DESIGN**

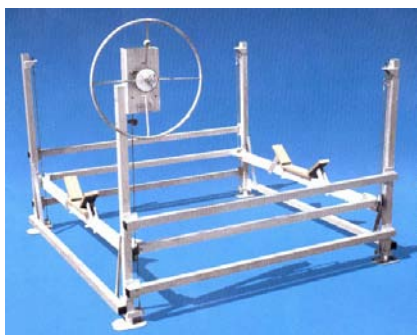
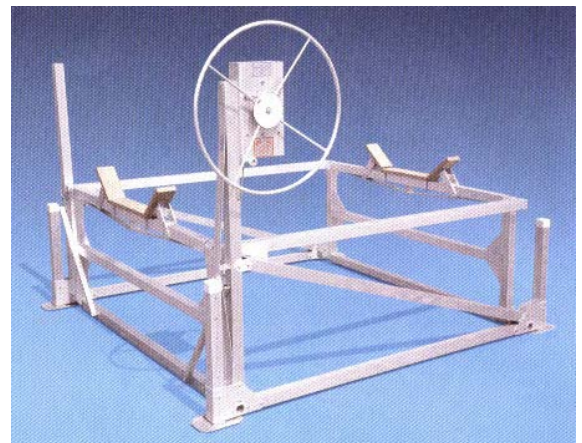


**PONTOON
LIFTS**



ALL-ALUMINUM CANTILEVER LIFTS

THESE RUGGED GENERAL PURPOSE LIFTS HAVE A LONG TRACK RECORD OF TROUBLE FREE PERFORMANCE. THE CANTILEVER DESIGN REQUIRES FEW MOVING PARTS FOR SUPERIOR RELIABILITY. THE DESIGN INCORPORATES A NATURAL MECHANICAL ADVANTAGE THAT ACTUALLY MAKES OPERATION EASIER AS THE BOAT IS RAISED HIGHER.
600 - 4800 LBS. CAPACITIES

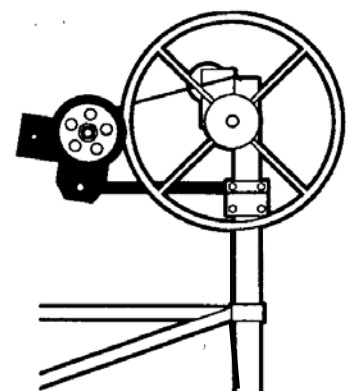


VERTICAL LIFTS

FOR DEEPER APPLICATIONS OR WHERE WATER LEVELS VARY SIGNIFICANTLY, THESE ECONOMICAL DIRECT RISE LIFTS FEATURE DURABLE ROCK SOLID CONSTRUCTION AND MORE TRAVEL.
RATED TO 6000#

POWER WHEEL DRIVE

USE A POWER WHEEL DRIVE OR DIRECT DRIVE TO LIFT YOUR BOAT WITH A PUSH BUTTON. LOTS OF OTHER BOAT LIFT ACCESSORIES



VINYL DECKING MATERIAL

Now the do-it-yourselfer can build a maintenance free lifetime dock for just a bit more than a wood dock. Benefits include no splinters, no staining, no nails popping up, no decking replacement issues and cool to walk on. We offer *Deck Lok* vinyl for stationary docks and light duty floaters. We offer the original *Brock* vinyl decking for floaters in heavier wakes or heavier duty service.

Brock vinyl decking material offers many advantages to the discriminating buyer. Not only is the appearance unsurpassed, but the owner can forget about maintenance. Originally introduced as a deck surface, the PVC material has grown rapidly as a dock surfacing material. Available in three colors (white, tan and gray), it is guaranteed for 20 years against cracking, breaking and discoloration. This marine grade PVC material stays cool to the touch on the hottest summer days. The patented "clip strip" attachment method means no fasteners are exposed - no nails or screws popping up! If you're tired of maintaining your wood or composite decking (and splinters) go for the gold with Brock decking!

Deck Lok™ is the newest deck material from the original Brock Deck manufacturer. It is a tongue and groove design and comes in light or dark sandlewood (tan) or light or dark driftwood.(gray) It is also rated to span 24" joist centers. Deck Lok optional deck pricing is listed with each deck kit. Photo illustrates both the deluxe vinyl trim kit and rub rail kit.



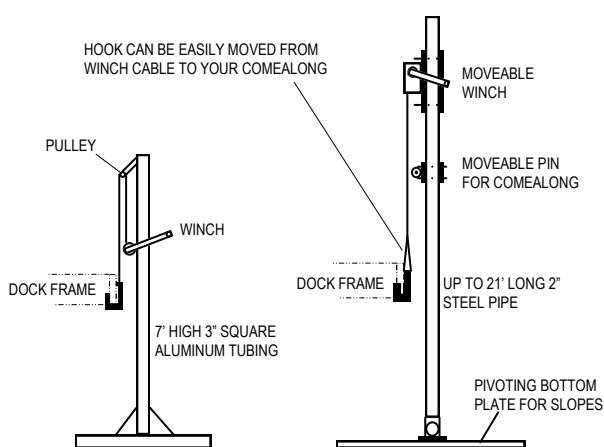
Our "**Classic**" maintenance free stationary dock supported with steel pipe assemblies (see P. 11), using sandlewood Deck Lok decking material, vinyl facia and rub rail around the sides. Decking material is easy to install and comes with complete instructions. In addition to being maintenance free, the "Classic" is so attractive, we can absolutely guarantee you will have the best looking dock on the lake!

DESIGN SERVICES

We will be happy to prepare drawings including lists of materials for your custom designed dock. These drawings may range from \$0-\$250 depending on your circumstances. If you are sure you will be purchasing from us, any charges for drawings are typically credited to your order. Basic computer generated drawings or sketches typically run \$50 and are commonly used for Corps of Engineer, Fish & Wildlife or Lake Association permit approval.

HANDY TOOLS

FRAMES ARE HEAVY! USE THESE TOOLS TO MAKE THE JOB EASIER.

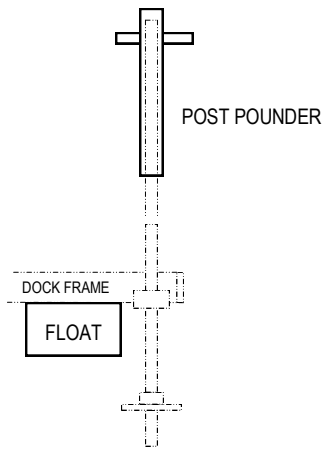


STANDARD & HEAVY DUTY LIFT JACKS

Use to lift frames, pull posts, etc. Heavy duty model comes up to 21' high and has additional hardware to attach your own come-a-long.

STANDARD \$215.00

HVY DUTY \$725.00



POST POUNDER & FLOATS

Floating your fixed pier into place makes the job much easier. If you have nothing to float it with, you can rent our floats. A post pounder can be much handier than a sledge hammer.

CALL FOR CURRENT PRICING

THE TOTAL PACKAGE—DECK AND DOCK

Why not consider a maintenance free deck overlooking your maintenance free dock? Our parent company, Decks-N-Docks, designs and builds decks (mostly vinyl) year round. The same design services are available from Decks-N-Docks to help with a project that makes your lake home attractive, unique and maintenance free! Leave the staining and repairing to your neighbor while you enjoy your investment. You can view many of our recent deck projects on our deck website www.decks-n-docks.com.

OTHER AVAILABLE LITERATURE

UniFrame Docks—ALUMINUM FRAMES WITH VINYL DECKING
 FRAME BUILDING INSTRUCTIONS
 POST LIGHTS, 12 VOLT & SOLAR
 PWC FLOATING PLATFORMS
 CANTILEVER BOAT LIFTS
DOCK^{Lite} ALUMINUM DOCKS & CONFIGURATION GUIDE

ADDITIONAL LADDERS
Roll-Easy DOCKING RAMPS FOR PWC'S & LIGHTER BOATS
 WOOD/VINYL DOCK INSTALLATION INSTRUCTIONS
 VERTICAL BOAT LIFTS
 FLOATING BOAT LIFTS
 DOCK PRIMER BOOKLET (\$15.00)

BACK COVER