

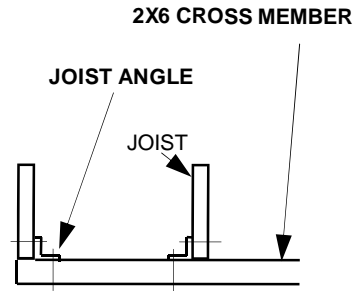
ONE PIECE HEAVY DUTY 6' X 12' FLOATING DOCK

Kit Name: 6x12 Floater

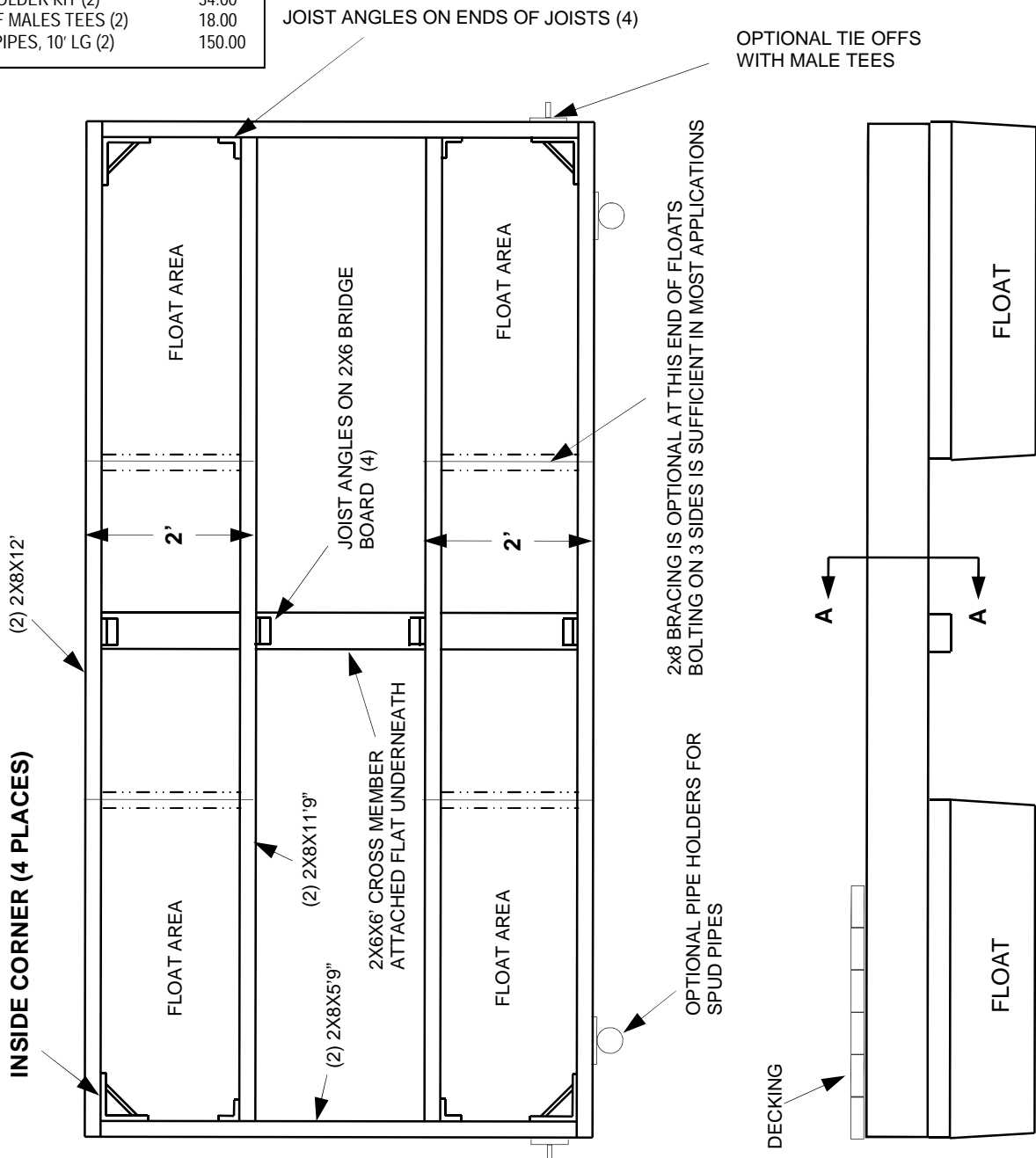
KIT INCLUDES	QTY
INSIDE CORNER, HL-IC	4
JOIST ANGLE, HL-A	8
FLOATS, F-2416	4
ALL HARDWARE, GALV.	
BUILD/INSTALL MANUALS	

KIT PRICE \$ 599.00
 APPROX CUSTOMER WOOD COST \$150.00

KIT OPTIONS:	
RUB RAIL/ CORNER BUMPERS	117.00
VINYL DECKING	563.00
DELUXE VINYL DECKING (INCL. FACIA MATL)	636.00
PIPE HOLDER KIT (2)	34.00
TIE OFF MALES TEES (2)	18.00
SPUD PIPES, 10' LG (2)	150.00



SECTION A-A

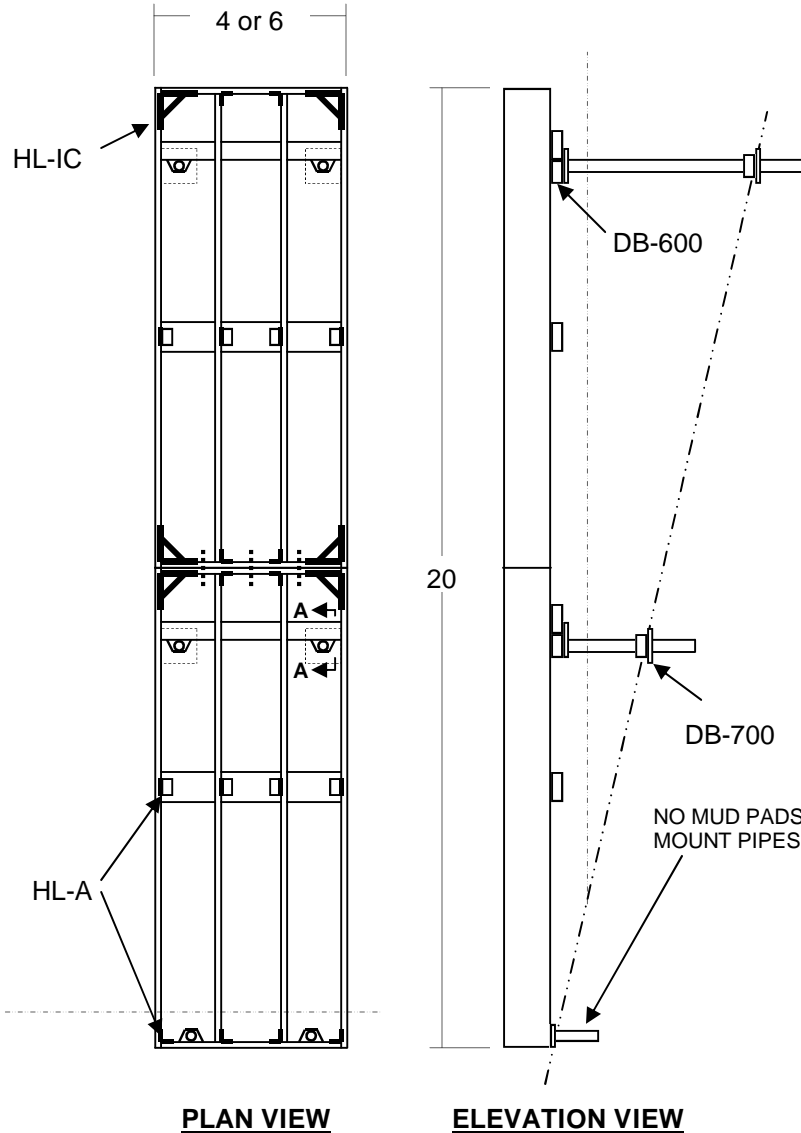


20' STRAIGHT PIER DESIGN—POSTS INSIDE

Kit Name: 20' Fixed Pier With Inside Posts

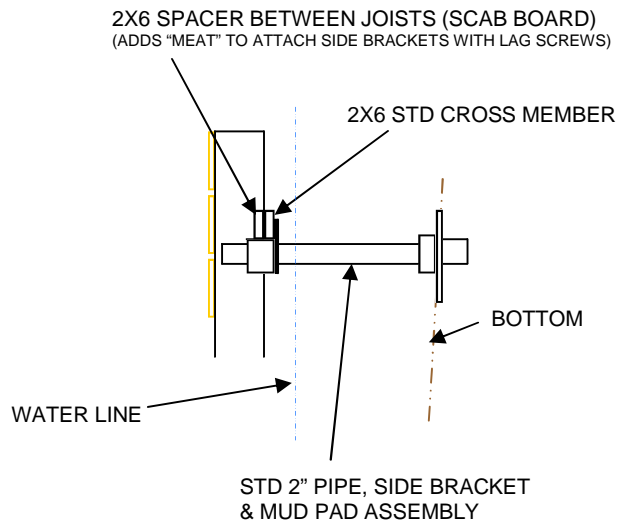
The most popular design for a straight pier has the support posts under the dock where they are not in the way of boats or fishing—not to mention that the overall appearance is more esthetically pleasing since the pipe is barely visible. The drawing below shows typical parts for a typical fixed pier recreational dock.

NO DECKING MATERIAL SHOWN



KIT INCLUDES	QTY
INSIDE CORNER, HL-IC	6
JOIST ANGLE, HL-A	18
SIDE BRACKET, DB-600	6
MUD PAD, DB-700	4
ALL HARDWARE, GALV.	
BUILD/INSTALL MANUALS	
KIT PRICE	\$ 385.00
APPROX CUSTOMER WOOD COST \$220.00	
KIT OPTIONS:	
RUB RAIL/ CORNER BUMPERS	136.00
VINYL DECKING	667.00
DELUXE VINYL DECKING (INCL. FACIA MATL)	805.00
SUPPORT PIPES, 7' LG (5)	250.00

SPECIFICATIONS	
MAIN FRAME & JOISTS	2 X 8
CROSS MEMBERS	2 X 6
DECKING	OPTIONAL
SUPPORTS	2" SCH 40 GALV PIPE
FACIA	SIDE BRACKETS, MUD PADS
RUB RAIL	OPTIONAL
CORNER BUMPERS	OPTIONAL

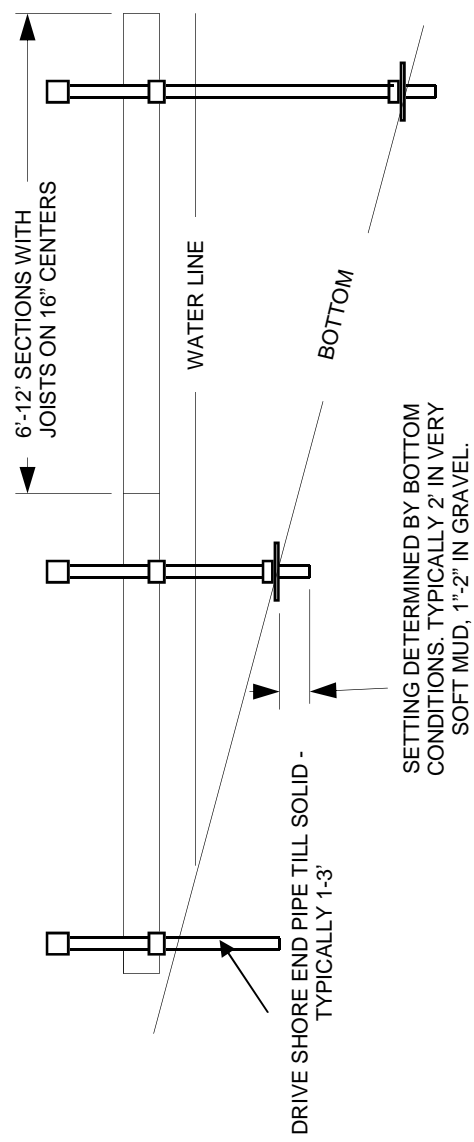
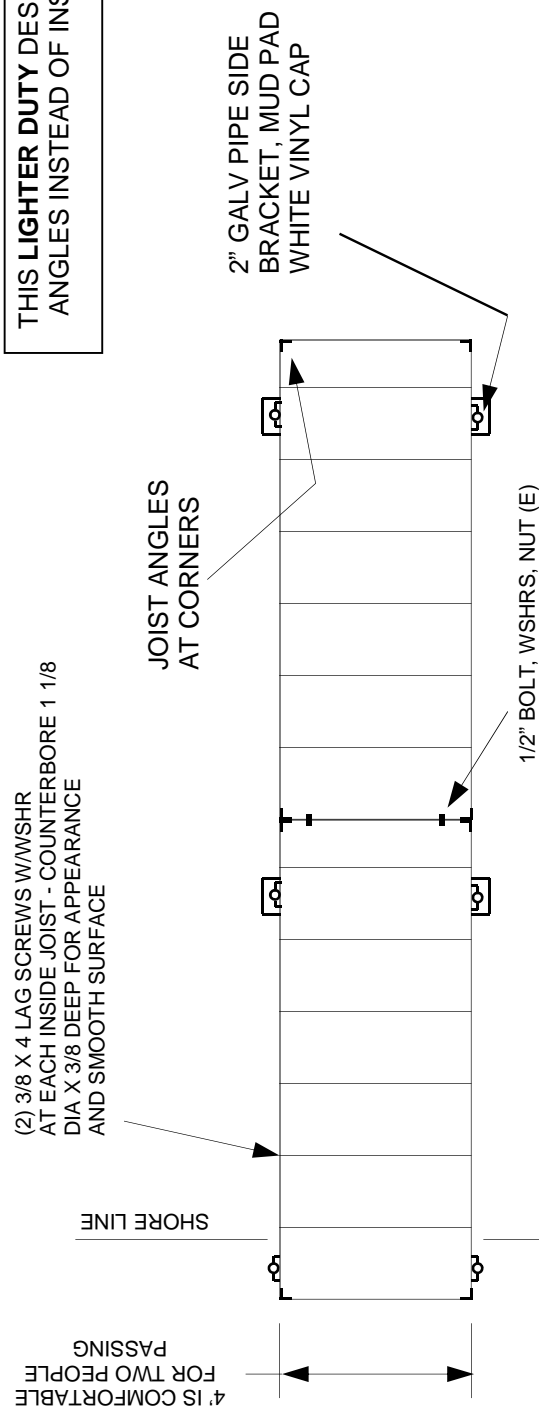


SECTION A-A

LIGHT DUTY 24' STRAIGHT PIER DESIGN

Kit Name: 24' Fixed Pier With Outside Posts

THIS LIGHTER DUTY DESIGN USES JOIST ANGLES INSTEAD OF INSIDE CORNERS

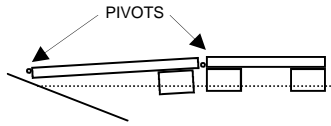


1. ALL SIDE BRACKETS & MUD PADS HAVE A SETSCREW FOR VERTICAL ADJUSTMENT.
 2. PIPES ARE NORMALLY CUT AFTER INSTALLATION TO SAME HEIGHT AND CAPPED.

KIT INCLUDES	QTY
JOIST ANGLE, HL-A	8
SIDE BRACKET, DB-600	6
MUD PAD, DB-700	4
ALL HARDWARE, GALV.	
BUILD/INSTALL MANUALS	
KIT PRICE	\$ 280.00
<small>APPROX CUSTOMER WOOD COST \$225.00</small>	
KIT OPTIONS:	
RUB RAIL/ CORNER BUMPERS	170.00
VINYL DECKING	782.00
DELUXE VINYL DECKING (INCL. FACIA MATL)	920.00
SUPPORT PIPES, 7' LG (5)	250.00

HEAVY DUTY SEMI-FLOATER & FLOATER

Kit Name: Floater, Semi-floater



SCHEMATIC SIDE VIEW
(AS WATER LEVEL VARIES
MAIN DOCK IS LEVEL AND
RAMP FOLLOWS MAIN DOCK)

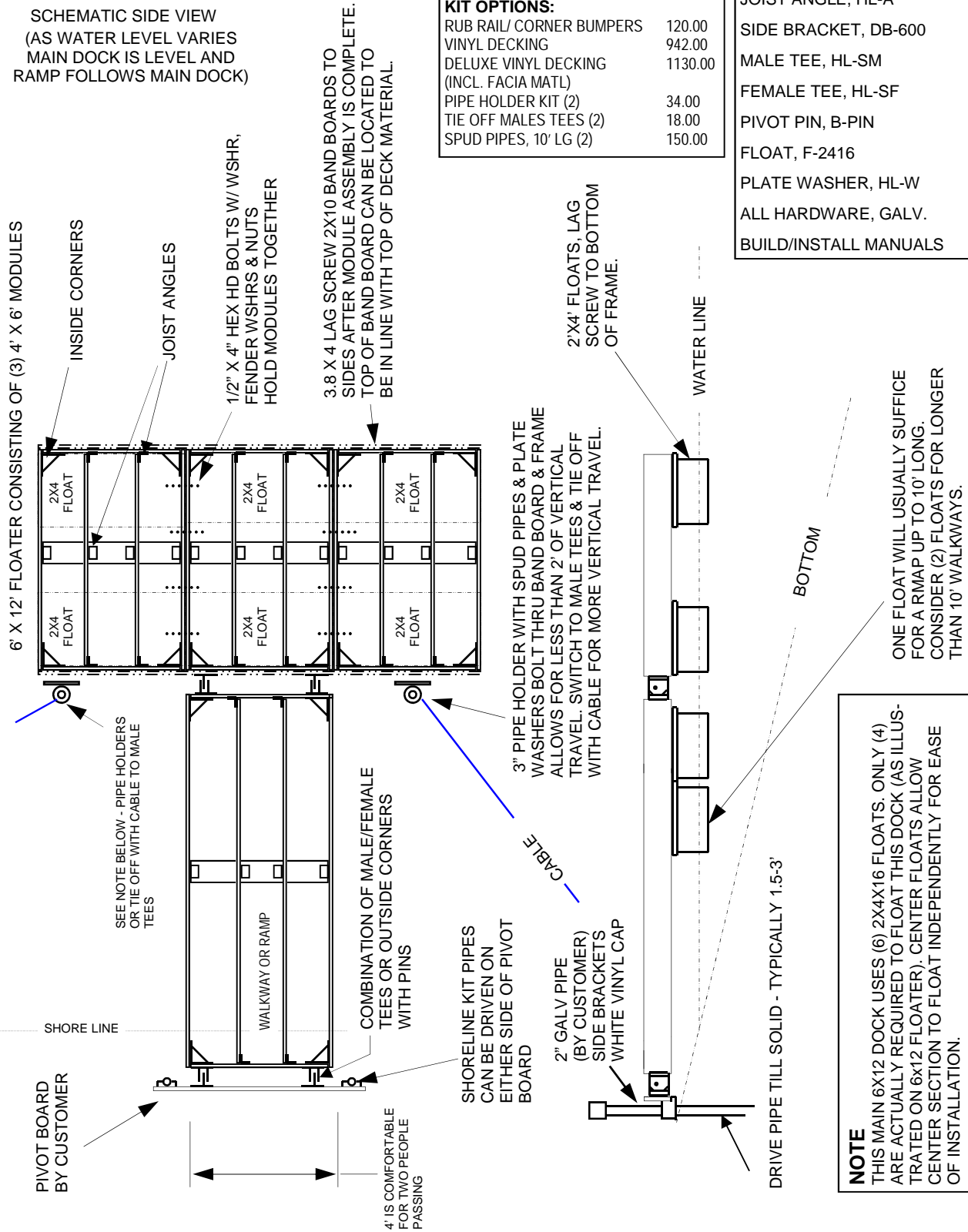
KIT PRICE \$ 1,499.00
(INCLUDING RAMP)

APPROX CUSTOMER
WOOD COST \$340.00

KIT OPTIONS:

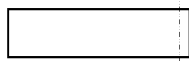
RUB RAIL/ CORNER BUMPERS	120.00
VINYL DECKING	942.00
DELUXE VINYL DECKING (INCL. FACIA MATL)	1130.00
PIPE HOLDER KIT (2)	34.00
TIE OFF MALES TEES (2)	18.00
SPUD PIPES, 10' LG (2)	150.00

KIT INCLUDES	QTY
INSIDE CORNER, HL-IC	16
JOIST ANGLE, HL-A	32
SIDE BRACKET, DB-600	2
MALE TEE, HL-SM	4
FEMALE TEE, HL-SF	4
PIVOT PIN, B-PIN	4
FLOAT, F-2416	7
PLATE WASHER, HL-W	4
ALL HARDWARE, GALV.	
BUILD/INSTALL MANUALS	

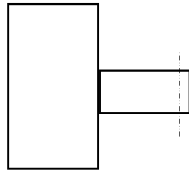


NOTE
THIS MAIN 6X12 DOCK USES (6) 2X4X16 FLOATS. ONLY (4) ARE ACTUALLY REQUIRED TO FLOAT THIS DOCK (AS ILLUSTRATED ON 6X12 FLOATER). CENTER FLOATS ALLOW CENTER SECTION TO FLOAT INDEPENDENTLY FOR EASE OF INSTALLATION.

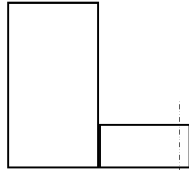
OTHER COMMON DOCK CONFIGURATIONS



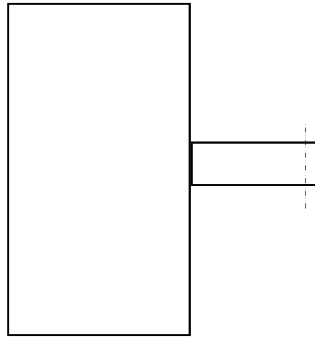
STRAIGHT
PIER



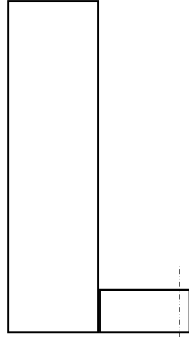
SMALL
T-SHAPE



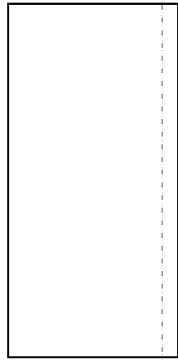
SMALL
L-SHAPE



LARGE
T-SHAPE



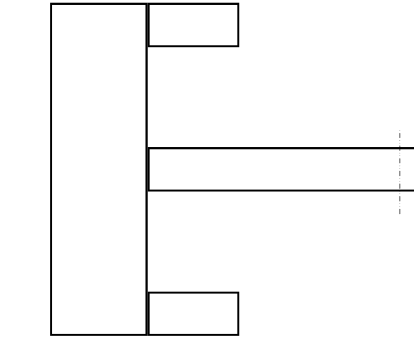
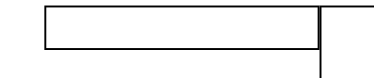
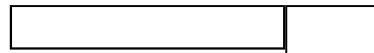
WIDER
L-SHAPE



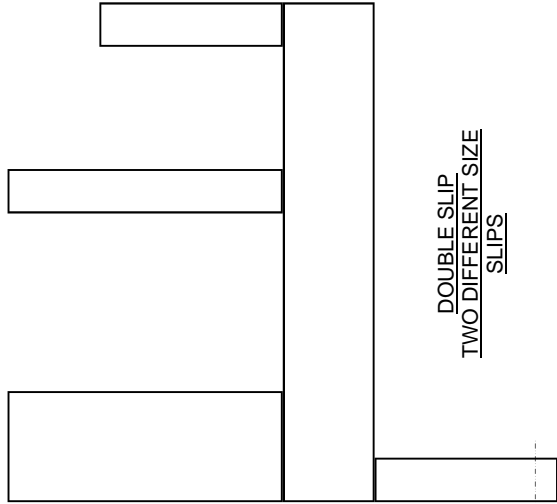
LARGER
PATIO
DOCK



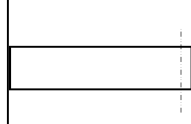
SLIP DOCK
WIDER
FINGER



I-SHAPE
TWO SHORE
SIDE FINGERS



DOUBLE SLIP
TWO DIFFERENT
SIZE
SLIPS



SLIP DOCK